

GROUND FLOOR

General Notes

Public areas were surveyed in the building.
Access to all the flats was not possible.

Footprint shown is assumed, the areas not surveyed cannot be relied upon unless checked onsite for accuracy.

Plans are for illustration purposes only and should not be relied upon for any works carried out or for area calculation or building works.

Key:

FIRE DOOR SIGNS AND FIRE ACTION NOTICES

- FAN** Fire Action Notice
- KS** "FIRE DOOR KEEP SHUT" sign
- KL** "FIRE DOOR KEEP LOCKED" sign
- KC** "AUTOMATIC FIRE DOOR KEEP CLEAR" or "FIRE EXIT KEEP CLEAR" sign.
- LAN** "CAUTION, IN THE EVENT OF FIRE DO NOT USE THIS LIFT"

FIRE PRECAUTIONS LEGEND

- Break glass type fire alarm call point.
- HD** Point type heat sensitive detectors.
- SD** Smoke sensitive detectors.
- SDR** Smoke detectors in roof space.
- FS** Flashing Strobe indicator.
- FAP** Fire alarm indicator / repeat panel.
- EM** Electromagnetic hold open devices
- FD20** 20 minute Fire resistant door (FD20).
- FED** Fire resistant flat entrance door.
- FD30S** Self-closing half-hour fire resisting door. (FD30S).
- FD60S** Self-closing one hour fire resisting. (FD60S).
- AOV** Doors activated by the fire alarm system or in the event of power failure to work as Automatic Opening vent
- DEL** Digital electronic lock door entry/exit system
- GH13** Door/Access fitted with Gerda H13 Key lock.
- GH36** Door/Access fitted with Gerda H36 Key lock.
- FL** Fire alarm sounder. ('X' indicates integral flashing Xenon light.)
- EL** Emergency light point.
- FIRE EXIT SIGNAGE**
- E** 'E' Signs to be externally illuminated by emergency light point.
- FE** 'FE' denotes as previous but illuminated as part of sign.
- RM** 'RM' denotes non illuminated sign
- B** 1.1m x 1.1m fire blankets.
- AF6** Base of fire blanket container to be 1500mm above floor level.
- C6** 6 litres AFFF aqueous foam extinguisher to BS-5575
- DP4.5** 9 litre wet chemical type extinguisher.
- DP4.5** 4.5 litre dry powder type extinguisher.
- CD4.5** 4.5 kg carbon dioxide type extinguisher.
- W9** 9 kg water type extinguisher.
- FS** Firemans Switch
- DKA** Emergency Drop Key Access
- Compartment Walls**
- SVC** Smoke Vent control panel
- POV** Permanently Open Vent
- PIB** Premises Information Box
- CCTV** CCTV Security Camera
- AOV** Automatic Opening Vent
- A** AOV Override Switch
- SPP** Sprinkler Control Panel
- FL** Firemans Lift



Firntec Building Compliance | www.firntec.com | info@firntec.com | 01752 977 147
1st Floor, Endeavour House, 3 Parkway Court, Plymouth, PL6 8LR

Project Address

BAGNALL COURT
GREENWAY
WYTHENSHAW
MANCHESTER
M22 4LT

Client:

WYTHENSHAW COMMUNITY HOUSING GROUP

Scale:

1:50 @ A1

Date:

SEP 2022

Drawn by:

NR

Checked by:

NR

Drawing Title:

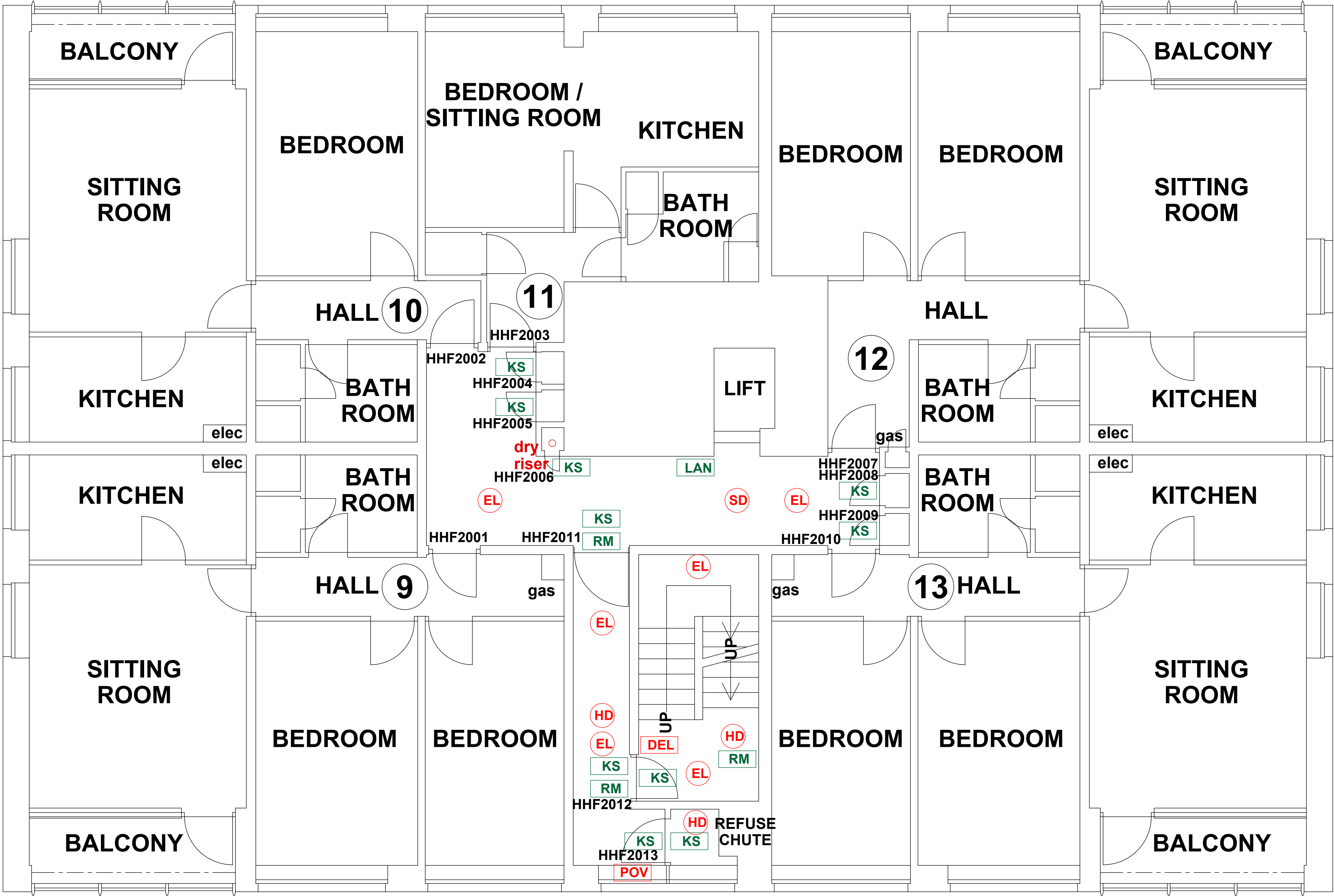
GROUND FLOOR PLAN

Drawing No:

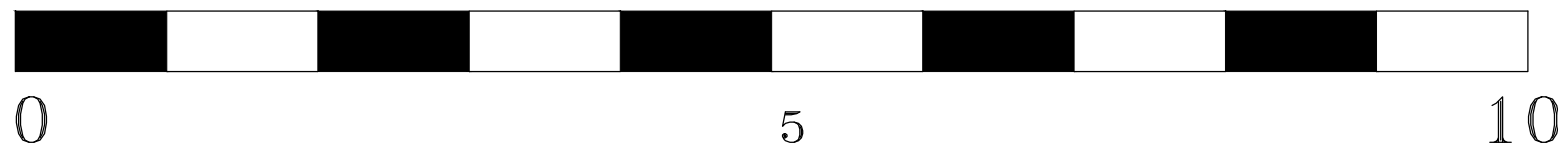
101 / 09 / 22

Revision

A



- FIRE PRECAUTIONS LEGEND**
- HB Break glass type fire alarm call point
 - SD Heat sensitive detectors
 - EL Smoke sensitive detectors
 - FS Emergency light point.
 - DKA Firemans Switch
 - FAP Emergency Drop Key Access
 - GD1 Fire alarm indicator / repeat panel
 - FB1 Door/Access fitted with Gerda D1 Key lock
 - FB2 Door/Access fitted with FB1 Key lock
 - FB4 Door/Access fitted with FB2 Key lock
 - FB11P Door/Access fitted with FB4 Key lock
 - FB14P Door/Access fitted with FB11 Padlock
 - DRO Door/Access fitted with FB14 Padlock
 - DEL Dry Riser Outlet
 - DEL Digital electronic lock door entry/exit system
 - PIB Premises Information Box
 - POV Permanently Open Vent
 - AOV Automatic Opening Vent
 - OV Openable Vent
 - Fire alarm sounder ('X' indicates integral flashing - Xenon light)
 - CCTV CCTV Security Camera
 - FB Fire Brigade Key Access
 - EXTINGUISH**
 - BLNRT 1.1m x 1.1m fire blanket - base of container to be 1500mm above floor level
 - AF 6 litres AFFF aqueous foam extinguisher to BS:6575
 - DP 9 litre wet chemical type extinguisher
 - DP 4.5 4.5 litre dry powder type extinguisher
 - CD 2 kg carbon dioxide type extinguisher
 - CD 4.5 4.5 kg carbon dioxide type extinguisher
 - W 9 kg water type extinguisher
 - W 6 6 litre water type extinguisher
 - FIRE EXIT SIGNAGE**
 - E 'E' Signs to be externally illuminated by adjacent emergency light point
 - FE 'FE' denotes as previous but illuminated as part of sign
 - RM 'RM' denotes non illuminated sign
 - FIRE DOOR SIGNS AND FIRE ACTION NOTICES**
 - FAN Fire Action Notice
 - EFP Emergency Floor Plan
 - KS "FIRE DOOR KEEP SHUT" sign
 - KL "FIRE DOOR KEEP LOCKED" sign
 - KC "AUTOMATIC FIRE DOOR KEEP CLEAR" or "FIRE EXIT KEEP CLEAR" sign
 - LAN "CAUTION, IN THE EVENT OF FIRE DO NOT USE THIS LIFT"
 - DB DISTRIBUTION BOARD



SCALE (METRES)

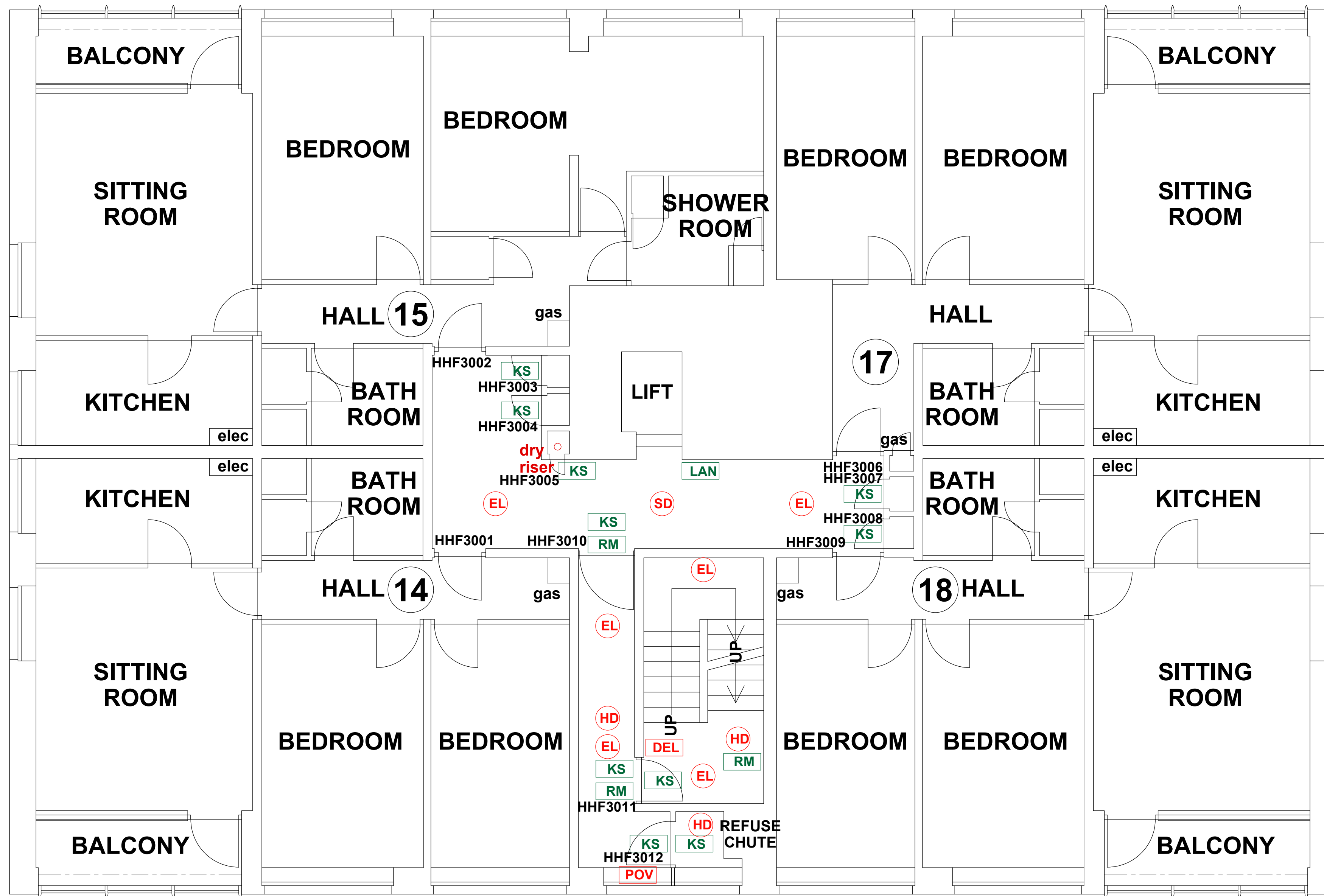
HOLLYHEDGE COURT SECOND FLOOR

REV DATE AMENDMENTS



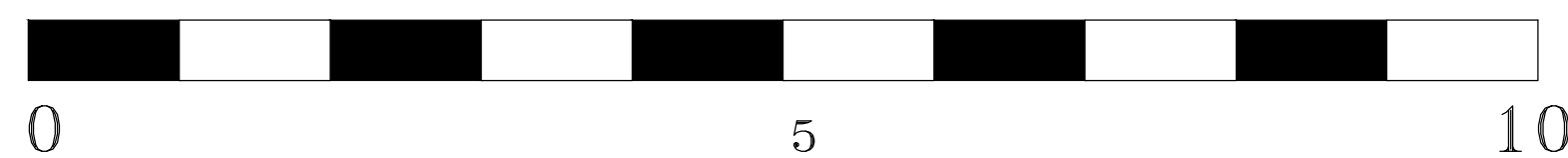
WEB: WWW.FIRNTEC.COM
EMAIL: CONTACTUS@FIRNTEC.COM
ADDRESS: 1ST FLOOR, ENDEAVOUR HOUSE,
PARKWAY CT, PLYMOUTH PL6 8LR
TEL: 01752 877 147

PROJECT: HOLLYHEDGE COURT
ADDRESS: WYTHENSHAW
MANCHESTER
M22 4QP
DWG NO.: HH-C-220020L03
DWG TITLE: LEVEL 2
DWG DATE: NOVEMBER 2022
DWG SIZE: SCALE 1:50 @ A1
DRAWN: NR
CHECKED: BR
ISSUE



FIRE PRECAUTIONS LEGEND

- ⊙ Break glass type fire alarm call point
- ⊙ HB Heat sensitive detectors
- ⊙ SD Smoke sensitive detectors
- ⊙ EL Emergency light point.
- ⊙ FS Firemans Switch
- ⊙ DKA Emergency Drop Key Access
- ⊙ FAP Fire alarm indicator / repeat panel
- ⊙ GD1 Door/Access fitted with Gerda D1 Key lock
- ⊙ FB1 Door/Access fitted with FB1 Key lock
- ⊙ FB2 Door/Access fitted with FB2 Key lock
- ⊙ FB4 Door/Access fitted with FB4 Key lock
- ⊙ FB11P Door/Access fitted with FB11 Padlock
- ⊙ FB14P Door/Access fitted with FB14 Padlock
- ⊙ DRO Dry Riser Outlet
- ⊙ DEL Digital electronic lock door entry/exit system
- ⊙ PIB Premises Information Box
- ⊙ POV Permanently Open Vent
- ⊙ AOV Automatic Opening Vent
- ⊙ OV Openable Vent
- ⊙ Fire alarm sounder ('X' indicates integral flashing - Xenon light)
- ⊙ CCTV CCTV Security Camera
- ⊙ FB Fire Brigade Key Access
- EXTINGUISH**
- ⊙ BELNRT 1.1m x 1.1m fire blanket - base of container to be 1500mm above floor level
- ⊙ AFFF 6 litres AFFF aqueous foam extinguisher to BS:6575
- ⊙ W 9 litre wet chemical type extinguisher
- ⊙ DP 4.5 4.5 litre dry powder type extinguisher
- ⊙ CO 2 2 kg carbon dioxide type extinguisher
- ⊙ CO 4.5 4.5 kg carbon dioxide type extinguisher
- ⊙ W 9 9 kg water type extinguisher
- ⊙ W 6 6 litre water type extinguisher
- FIRE EXIT SIGNAGE**
- ⊙ E 'E' Signs to be externally illuminated by adjacent emergency light point
- ⊙ FE 'FE' denotes as previous but illuminated as part of sign
- ⊙ RM 'RM' denotes non illuminated sign
- FIRE DOOR SIGNS AND FIRE ACTION NOTICES**
- ⊙ FAN Fire Action Notice
- ⊙ EFP Emergency Floor Plan
- ⊙ KS "FIRE DOOR KEEP SHUT" sign
- ⊙ KL "FIRE DOOR KEEP LOCKED" sign
- ⊙ KC "AUTOMATIC FIRE DOOR KEEP CLEAR" or "FIRE EXIT KEEP CLEAR" sign
- ⊙ LAN "CAUTION, IN THE EVENT OF FIRE DO NOT USE THIS LIFT"
- ⊙ DB DISTRIBUTION BOARD



SCALE (METRES)

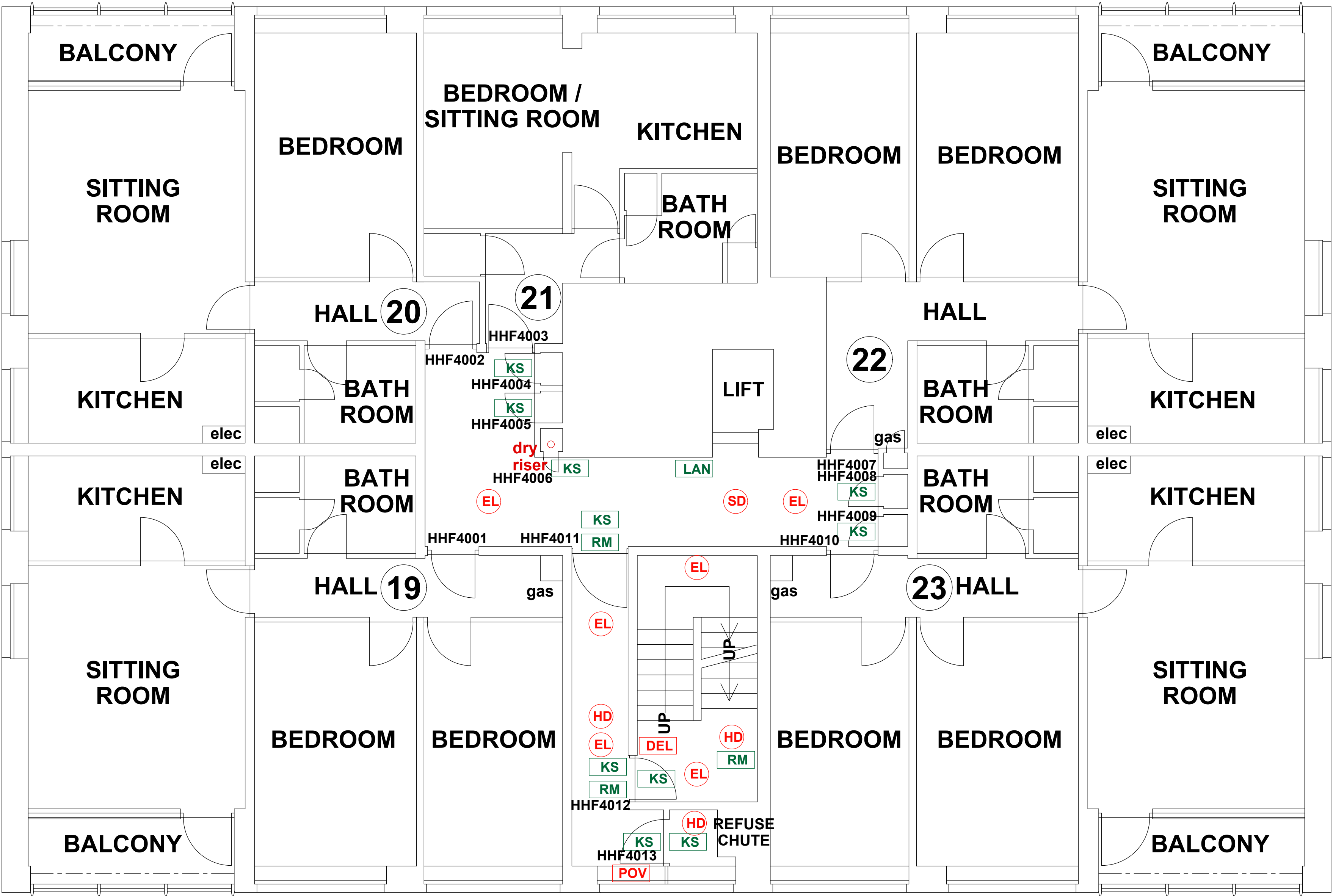
HOLLYHEDGE COURT THIRD FLOOR

REV DATE AMENDMENTS

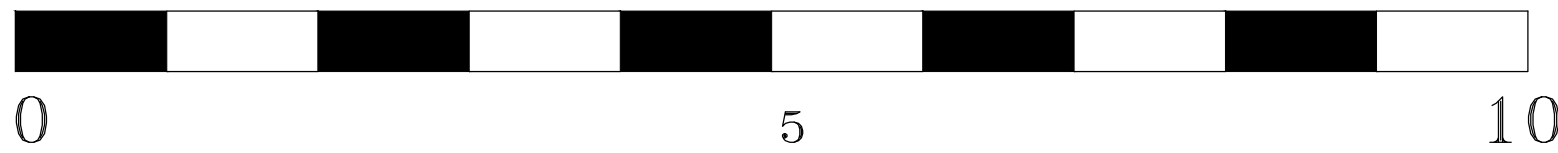


WEB: WWW.FIRNTEC.COM
EMAIL: CONTACTUS@FIRNTEC.COM
ADDRESS: 1ST FLOOR, ENDEAVOUR HOUSE,
PARKWAY CT, PLYMOUTH PL6 8LR
TEL: 01752 877 147

PROJECT: HOLLYHEDGE COURT
ADDRESS: HOLLYHEDGE COURT
WYTHENSHAW
MANCHESTER
M22 4QP
DWG NO.: HH-C-220020L-04
DWG TITLE: LEVEL 3
DWG DATE: NOVEMBER 2022
DWG SIZE: SCALE 1:50 @ A1
DRAWN: NR CHECKED: BR



- FIRE PRECAUTIONS LEGEND**
- ⊙ Break glass type fire alarm call point
 - ⊙ HB Heat sensitive detectors
 - ⊙ SD Smoke sensitive detectors
 - ⊙ EL Emergency light point.
 - ⊙ FS Firemans Switch
 - ⊙ DKA Emergency Drop Key Access
 - FAP Fire alarm indicator / repeat panel
 - GD1 Door/Access fitted with Gerda D1 Key lock
 - FB1 Door/Access fitted with FB1 Key lock
 - FB2 Door/Access fitted with FB2 Key lock
 - FB4 Door/Access fitted with FB4 Key lock
 - FB11P Door/Access fitted with FB11 Padlock
 - FB14P Door/Access fitted with FB14 Padlock
 - DRO Dry Riser Outlet
 - DEL Digital electronic lock door entry/exit system
 - PB Premises Information Box
 - POV Permanently Open Vent
 - AOV Automatic Opening Vent
 - OV Openable Vent
 - Fire alarm sounder ('X' indicates integral flashing - Xenon light)
 - CCTV CCTV Security Camera
 - FB Fire Brigade Key Access
 - EXTINGUISH**
 - BLNRT 1.1m x 1.1m fire blanket - base of container to be 1500mm above floor level
 - AF 6 litres AFFF aqueous foam extinguisher to BS:6575
 - C 9 litre wet chemical type extinguisher
 - DP 4.5 4.5 litre dry powder type extinguisher
 - CD 2 2 kg carbon dioxide type extinguisher
 - CD 4.5 4.5 kg carbon dioxide type extinguisher
 - W 9 9 kg water type extinguisher
 - W 6 6 litre water type extinguisher
 - FIRE EXIT SIGNAGE**
 - E 'E' Signs to be externally illuminated by adjacent emergency light point
 - FE 'FE' denotes as previous but illuminated as part of sign
 - RM 'RM' denotes non illuminated sign
 - FIRE DOOR SIGNS AND FIRE ACTION NOTICES**
 - FAN Fire Action Notice
 - EFP Emergency Floor Plan
 - KS "FIRE DOOR KEEP SHUT" sign
 - KL "FIRE DOOR KEEP LOCKED" sign
 - KC "AUTOMATIC FIRE DOOR KEEP CLEAR" or "FIRE EXIT KEEP CLEAR" sign
 - LAN "CAUTION, IN THE EVENT OF FIRE DO NOT USE THIS LIFT"
 - DB DISTRIBUTION BOARD



SCALE (METRES)

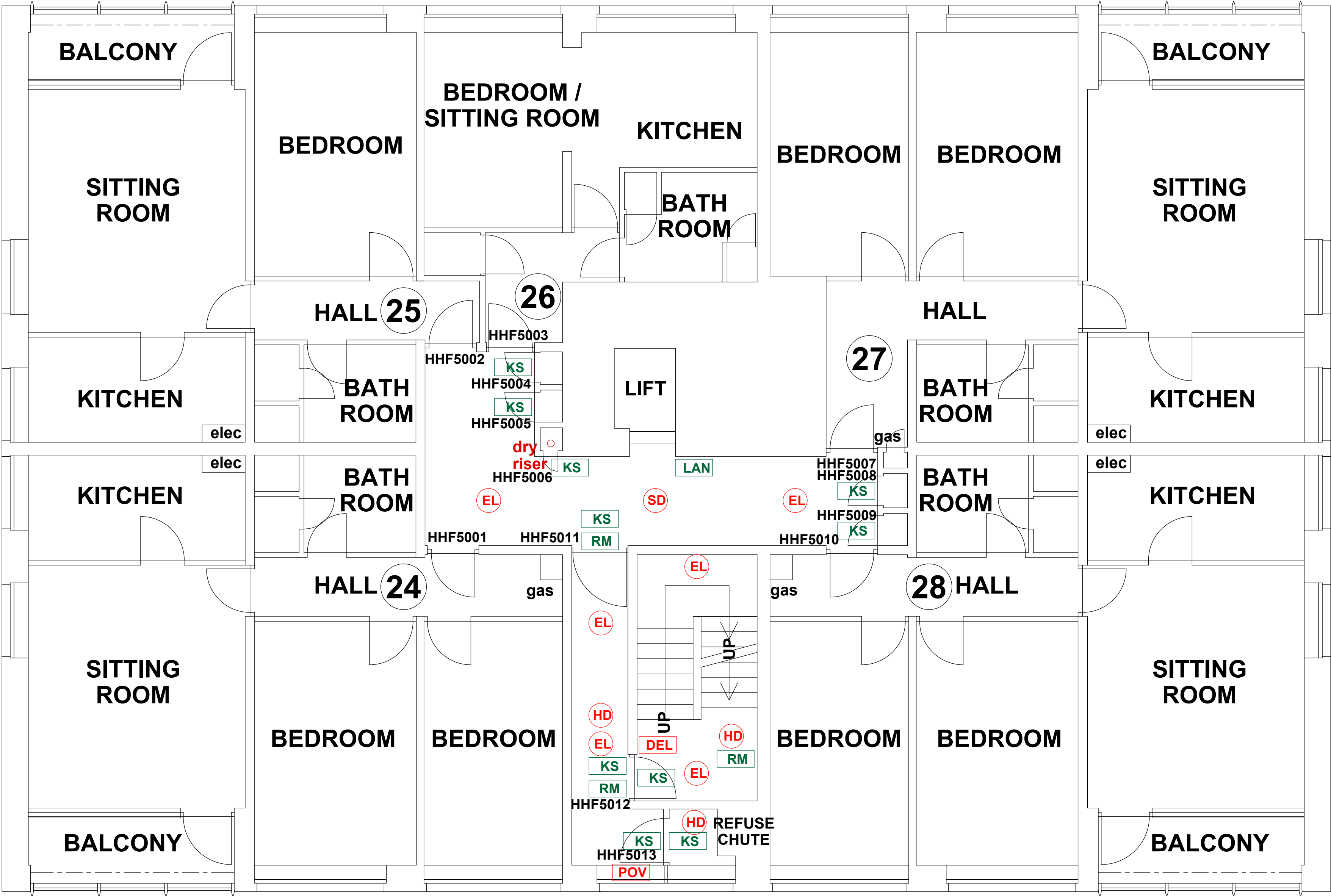
HOLLYHEDGE COURT FOURTH FLOOR

REV DATE AMENDMENTS

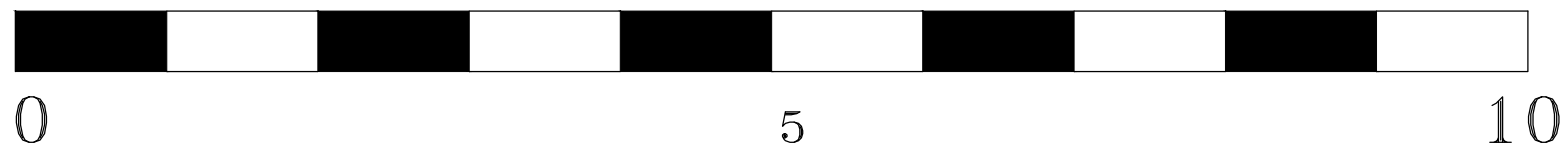


WEB: WWW.FIRNTEC.COM
EMAIL: CONTACTUS@FIRNTEC.COM
ADDRESS: 1ST FLOOR, ENDEAVOUR HOUSE,
PARKWAY CT, PLYMOUTH PL6 8LR
TEL: 01752 877 147

PROJECT: HOLLYHEDGE COURT
ADDRESS: HOLLYHEDGE COURT
WYTHENSHAW
MANCHESTER
M22 4QP
DWG NO.: HH-C-220020L05
DWG TITLE: LEVEL 4
DWG DATE: NOVEMBER 2022
DWG SIZE: SCALE 1:50 @ A1
DRAWN: NR | CHECKED: BR | ISSUED



- FIRE PRECAUTIONS LEGEND**
- ⊙ Break glass type fire alarm call point
 - ⊙ HB Heat sensitive detectors
 - ⊙ SD Smoke sensitive detectors
 - ⊙ EL Emergency light point.
 - ⊙ FS Firemans Switch
 - ⊙ DKA Emergency Drop Key Access
 - FAP Fire alarm indicator / repeat panel
 - GD1 Door/Access fitted with Gerda D1 Key lock
 - FB1 Door/Access fitted with FB1 Key lock
 - FB2 Door/Access fitted with FB2 Key lock
 - FB4 Door/Access fitted with FB4 Key lock
 - FB11P Door/Access fitted with FB11 Padlock
 - FB14P Door/Access fitted with FB14 Padlock
 - DRO Dry Riser Outlet
 - DEL Digital electronic lock door entry/exit system
 - PIB Premises Information Box
 - POV Permanently Open Vent
 - AOV Automatic Opening Vent
 - OV Openable Vent
 - Fire alarm sounder ('X' indicates integral flashing - Xenon light)
 - CCTV CCTV Security Camera
 - FB Fire Brigade Key Access
 - EXTINGUISH**
 - BLNRT 1.1m x 1.1m fire blanket - base of container to be 1500mm above floor level
 - AF 6 litres AFFF aqueous foam extinguisher to BS:6575
 - W 9 litre wet chemical type extinguisher
 - DP 4.5 9 litre dry powder type extinguisher
 - CO 2 2 kg carbon dioxide type extinguisher
 - CO 4.5 4.5 kg carbon dioxide type extinguisher
 - W 9 9 kg water type extinguisher
 - W 6 6 litre water type extinguisher
 - FIRE EXIT SIGNAGE**
 - E 'E' Signs to be externally illuminated by adjacent emergency light point
 - FE 'FE' denotes as previous but illuminated as part of sign
 - RM 'RM' denotes non illuminated sign
 - FIRE DOOR SIGNS AND FIRE ACTION NOTICES**
 - FAN Fire Action Notice
 - EFPP Emergency Floor Plan
 - KS "FIRE DOOR KEEP SHUT" sign
 - KL "FIRE DOOR KEEP LOCKED" sign
 - KC "AUTOMATIC FIRE DOOR KEEP CLEAR" or "FIRE EXIT KEEP CLEAR" sign
 - LAN "CAUTION, IN THE EVENT OF FIRE DO NOT USE THIS LIFT"
 - DB DISTRIBUTION BOARD



SCALE (METRES)

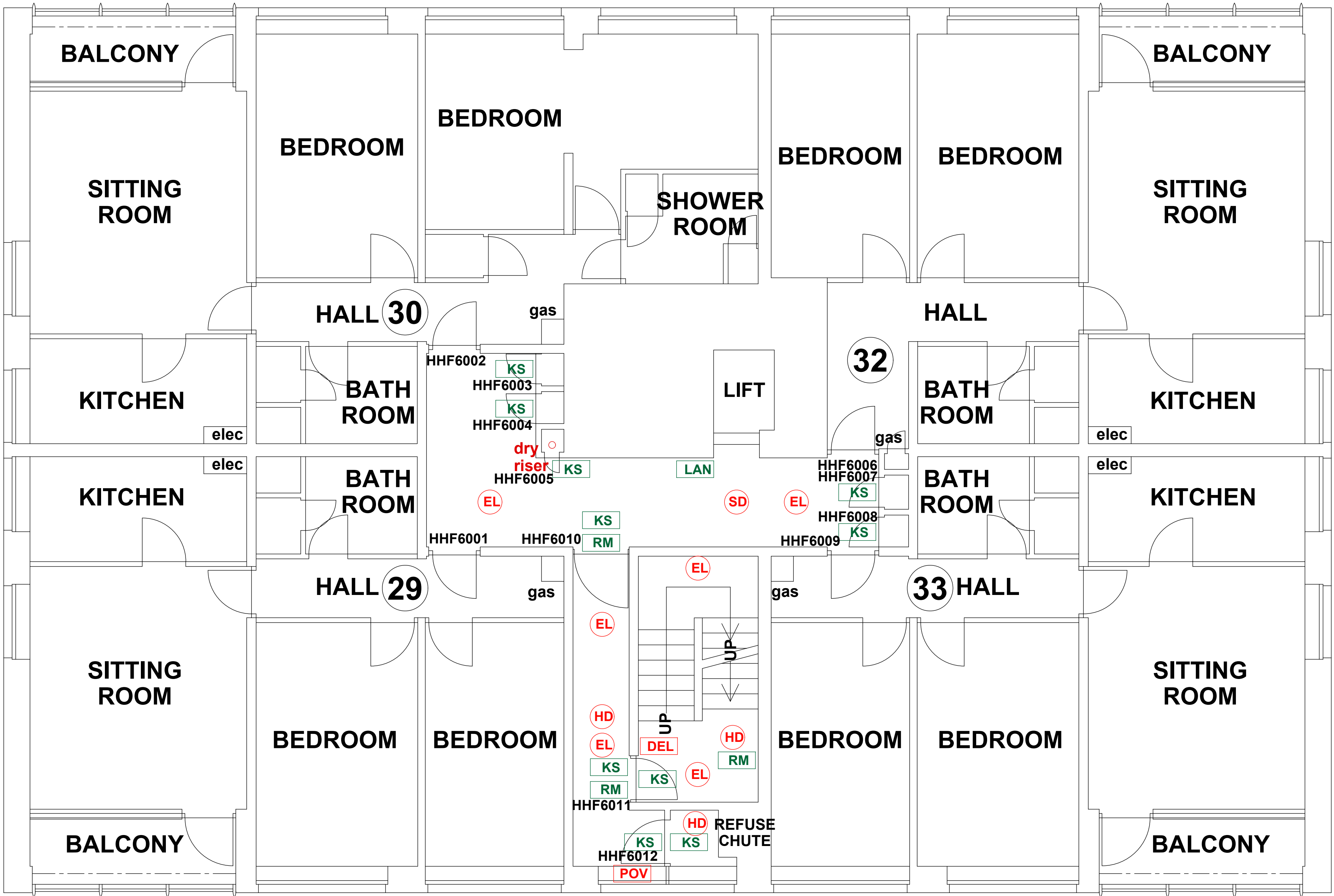
HOLLYHEDGE COURT FIFTH FLOOR

REV DATE AMENDMENTS

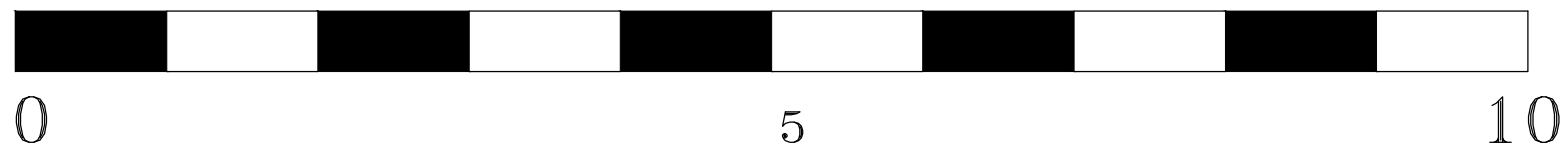


WEB: WWW.FIRNTEC.COM
EMAIL: CONTACTUS@FIRNTEC.COM
ADDRESS: 1ST FLOOR, ENDEAVOUR HOUSE,
PARKWAY CT, PLYMOUTH PL6 8LR
TEL: 01752 877 147

PROJECT: **HOLLYHEDGE COURT**
ADDRESS: HOLLYHEDGE COURT
WYTHENSHAW
MANCHESTER
M22 4QP
DWG NO.: HH-C-220020L-06
DWG TITLE: LEVEL 5
DWG DATE: NOVEMBER 2022
DWG SIZE: SCALE 1:50 @ A1
DRAWN: NR | CHECKED: BR | ISSUED



- FIRE PRECAUTIONS LEGEND**
- HB Break glass type fire alarm call point
 - SD Heat sensitive detectors
 - EL Smoke sensitive detectors
 - EL Emergency light point.
 - FS Firemans Switch
 - DKA Emergency Drop Key Access
 - FAP Fire alarm indicator / repeat panel
 - GD1 Door/Access fitted with Gerda D1 Key lock
 - FB1 Door/Access fitted with FB1 Key lock
 - FB2 Door/Access fitted with FB2 Key lock
 - FB4 Door/Access fitted with FB4 Key lock
 - FB11P Door/Access fitted with FB11 Padlock
 - FB14P Door/Access fitted with FB14 Padlock
 - DRO Dry Riser Outlet
 - DEL Digital electronic lock door entry/exit system
 - PB Premises Information Box
 - POV Permanently Open Vent
 - AOV Automatic Opening Vent
 - OV Openable Vent
 - Fire alarm sounder ('X' indicates integral flashing - Xenon light)
 - CCTV CCTV Security Camera
 - FB Fire Brigade Key Access
 - EXTINGUISH**
 - BLNRT 1.1m x 1.1m fire blanket - base of container to be 1500mm above floor level
 - A 6 litres AFFF aqueous foam extinguisher to BS:6575
 - C 9 litre wet chemical type extinguisher
 - D 4.5 litre dry powder type extinguisher
 - C 2 kg carbon dioxide type extinguisher
 - C 4.5 kg carbon dioxide type extinguisher
 - W 9 kg water type extinguisher
 - W 6 litre water type extinguisher
 - FIRE EXIT SIGNAGE**
 - E 'E' Signs to be externally illuminated by adjacent emergency light point
 - FE 'FE' denotes as previous but illuminated as part of sign
 - RM 'RM' denotes non illuminated sign
 - FIRE DOOR SIGNS AND FIRE ACTION NOTICES**
 - FAN Fire Action Notice
 - EFP Emergency Floor Plan
 - KS "FIRE DOOR KEEP SHUT" sign
 - KL "FIRE DOOR KEEP LOCKED" sign
 - KC "AUTOMATIC FIRE DOOR KEEP CLEAR" or "FIRE EXIT KEEP CLEAR" sign
 - LAN "CAUTION, IN THE EVENT OF FIRE DO NOT USE THIS LIFT"
 - DB DISTRIBUTION BOARD



SCALE (METRES)

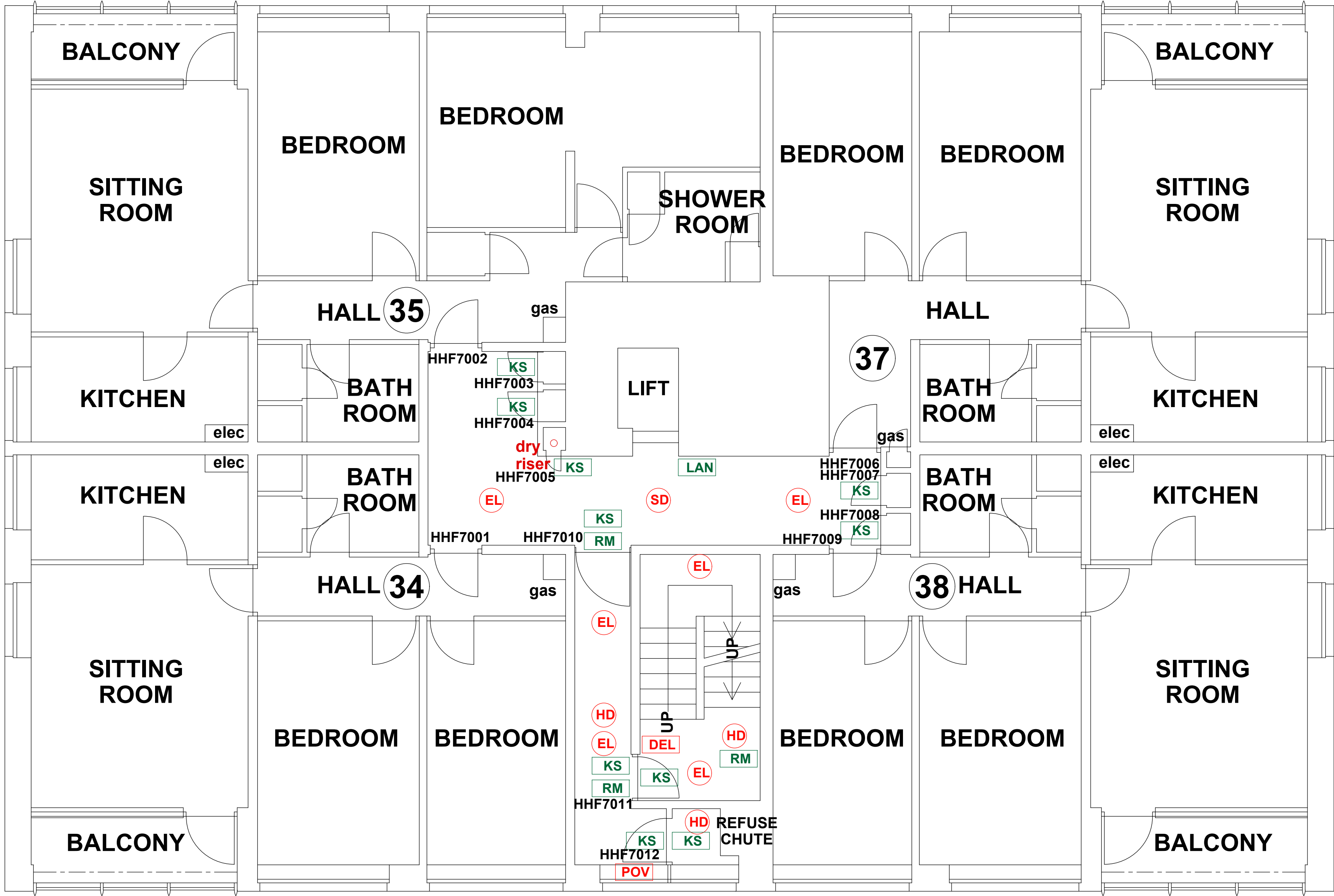
HOLLYHEDGE COURT SIXTH FLOOR

REV DATE AMENDMENTS

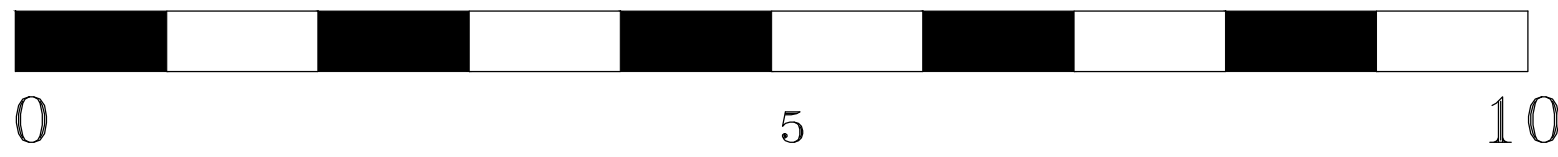


WEB: WWW.FIRNTEC.COM
EMAIL: CONTACTUS@FIRNTEC.COM
ADDRESS: 1ST FLOOR, ENDEAVOUR HOUSE,
PARKWAY CT, PLYMOUTH PL6 8LR
TEL: 01752 877 147

PROJECT: HOLLYHEDGE COURT
ADDRESS: HOLLYHEDGE COURT
WYTHENSHAW
MANCHESTER
M22 4QP
DWG NO.: HH-C-220020L07
DWG TITLE: LEVEL 6
DWG DATE: NOVEMBER 2022
DWG SIZE: SCALE 1:50 @ A1
DRAWN: NR CHECKED: BR



- FIRE PRECAUTIONS LEGEND**
- ⊙ Break glass type fire alarm call point
 - ⊙ HB Heat sensitive detectors
 - ⊙ SD Smoke sensitive detectors
 - ⊙ EL Emergency light point.
 - ⊙ FS Firemans Switch
 - ⊙ DKA Emergency Drop Key Access
 - FAP Fire alarm indicator / repeat panel
 - GD1 Door/Access fitted with Gerda D1 Key lock
 - FB1 Door/Access fitted with FB1 Key lock
 - FB2 Door/Access fitted with FB2 Key lock
 - FB4 Door/Access fitted with FB4 Key lock
 - FB11P Door/Access fitted with FB11 Padlock
 - FB14P Door/Access fitted with FB14 Padlock
 - DRO Dry Riser Outlet
 - DEL Digital electronic lock door entry/exit system
 - PB Premises Information Box
 - POV Permanently Open Vent
 - AOV Automatic Opening Vent
 - OV Openable Vent
 - Fire alarm sounder ('X' indicates integral flashing - Xenon light)
 - CCTV CCTV Security Camera
 - FB Fire Brigade Key Access
 - EXTINGUISH**
 - BLNRT 1.1m x 1.1m fire blanket - base of container to be 1500mm above floor level
 - AF 6 litres AFFF aqueous foam extinguisher to BS:6575
 - W 9 litre wet chemical type extinguisher
 - DP 4.5 9 litre dry powder type extinguisher
 - CO 2 2 kg carbon dioxide type extinguisher
 - CO 4.5 4.5 kg carbon dioxide type extinguisher
 - W 9 9 kg water type extinguisher
 - W 6 6 litre water type extinguisher
 - FIRE EXIT SIGNAGE**
 - E 'E' Signs to be externally illuminated by adjacent emergency light point
 - FE 'FE' denotes as previous but illuminated as part of sign
 - RM 'RM' denotes non illuminated sign
 - FIRE DOOR SIGNS AND FIRE ACTION NOTICES**
 - FAN Fire Action Notice
 - EFPP Emergency Floor Plan
 - KS "FIRE DOOR KEEP SHUT" sign
 - KL "FIRE DOOR KEEP LOCKED" sign
 - KC "AUTOMATIC FIRE DOOR KEEP CLEAR" or "FIRE EXIT KEEP CLEAR" sign
 - LAN "CAUTION, IN THE EVENT OF FIRE DO NOT USE THIS LIFT"
 - DB DISTRIBUTION BOARD



SCALE (METRES)

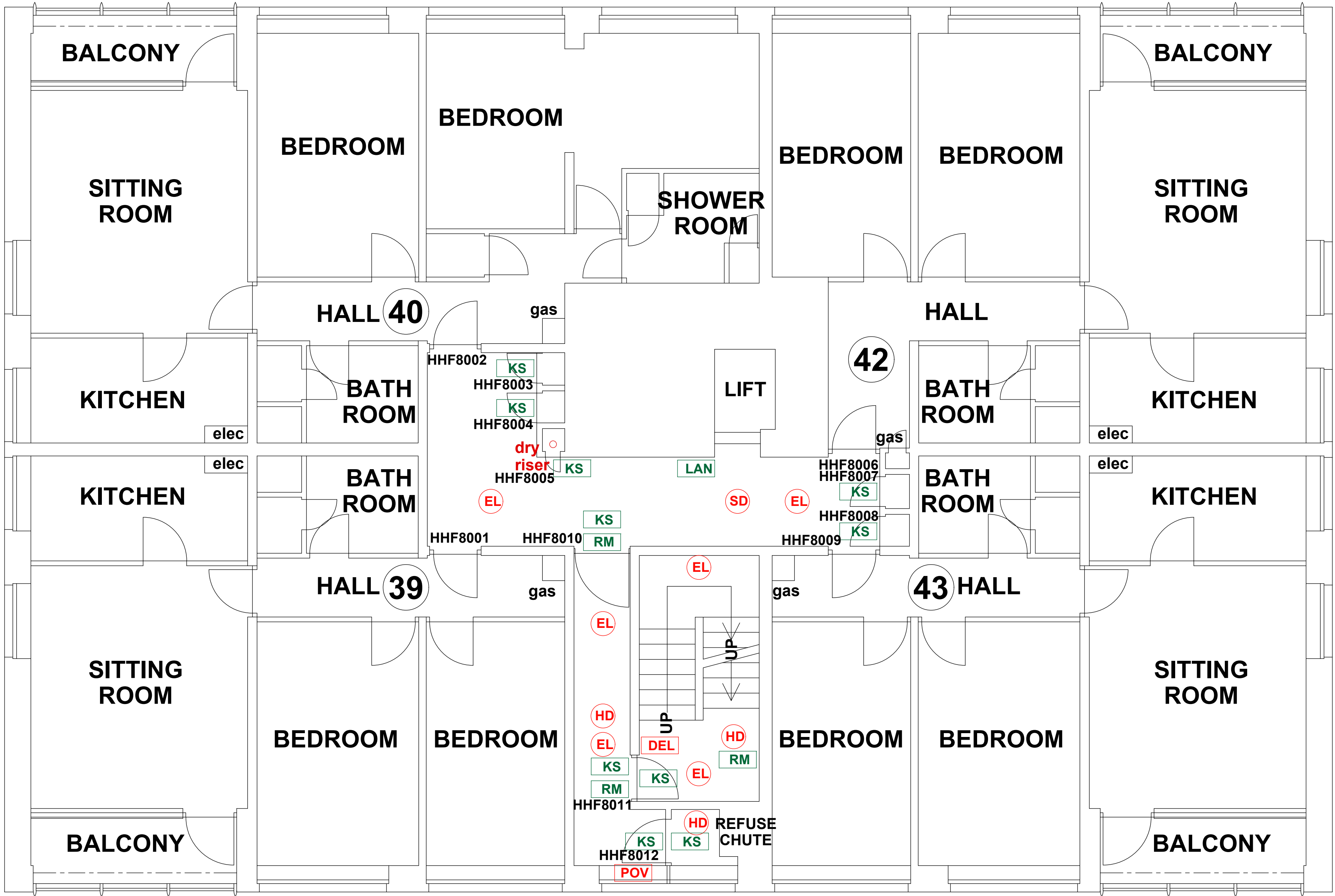
HOLLYHEDGE COURT SEVENTH FLOOR

REV | DATE | AMENDMENTS

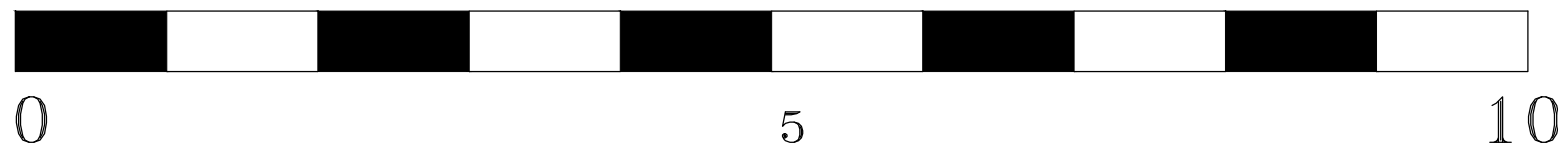


WEB: WWW.FIRNTEC.COM
EMAIL: CONTACTUS@FIRNTEC.COM
ADDRESS: 1ST FLOOR, ENDEAVOUR HOUSE,
PARKWAY CT, PLYMOUTH PL6 8LR
TEL: 01752 877 147

PROJECT: HOLLYHEDGE COURT
ADDRESS: HOLLYHEDGE COURT
WYTHENSHAW
MANCHESTER
M22 4QP
DWG NO.: HH-C-220020L-08
DWG TITLE: LEVEL 7
DWG DATE: NOVEMBER 2022
DWG SIZE: SCALE 1:50 @ A1
DRAWN: NR | CHECKED: BR | ISSUED



- FIRE PRECAUTIONS LEGEND**
- ⊙ Break glass type fire alarm call point
 - ⊙ HB Heat sensitive detectors
 - ⊙ SD Smoke sensitive detectors
 - ⊙ EL Emergency light point.
 - ⊙ FS Firemans Switch
 - ⊙ DKA Emergency Drop Key Access
 - FAP Fire alarm indicator / repeat panel
 - GD1 Door/Access fitted with Gerda D1 Key lock
 - FB1 Door/Access fitted with FB1 Key lock
 - FB2 Door/Access fitted with FB2 Key lock
 - FB4 Door/Access fitted with FB4 Key lock
 - FB11P Door/Access fitted with FB11 Padlock
 - FB14P Door/Access fitted with FB14 Padlock
 - DRO Dry Riser Outlet
 - DEL Digital electronic lock door entry/exit system
 - PIB Premises Information Box
 - POV Permanently Open Vent
 - AOV Automatic Opening Vent
 - OV Openable Vent
 - Fire alarm sounder ('X' indicates integral flashing - Xenon light)
 - CCTV CCTV Security Camera
 - FB Fire Brigade Key Access
- EXTINGUISH**
- BLNRT 1.1m x 1.1m fire blanket - base of container to be 1500mm above floor level
 - AF 6 litres AFFF aqueous foam extinguisher to BS:6575
 - W 9 litre wet chemical type extinguisher
 - DP 4.5 9 litre dry powder type extinguisher
 - CO 2 2 kg carbon dioxide type extinguisher
 - CO 4.5 4.5 kg carbon dioxide type extinguisher
 - W 9 9 kg water type extinguisher
 - W 6 6 litre water type extinguisher
- FIRE EXIT SIGNAGE**
- E 'E' Signs to be externally illuminated by adjacent emergency light point
 - FE 'FE' denotes as previous but illuminated as part of sign
 - RM 'RM' denotes non illuminated sign
- FIRE DOOR SIGNS AND FIRE ACTION NOTICES**
- FAN Fire Action Notice
 - EFP Emergency Floor Plan
 - KS "FIRE DOOR KEEP SHUT" sign
 - KL "FIRE DOOR KEEP LOCKED" sign
 - KC "AUTOMATIC FIRE DOOR KEEP CLEAR" or "FIRE EXIT KEEP CLEAR" sign
 - LAN "CAUTION, IN THE EVENT OF FIRE DO NOT USE THIS LIFT"
 - DB DISTRIBUTION BOARD



SCALE (METRES)

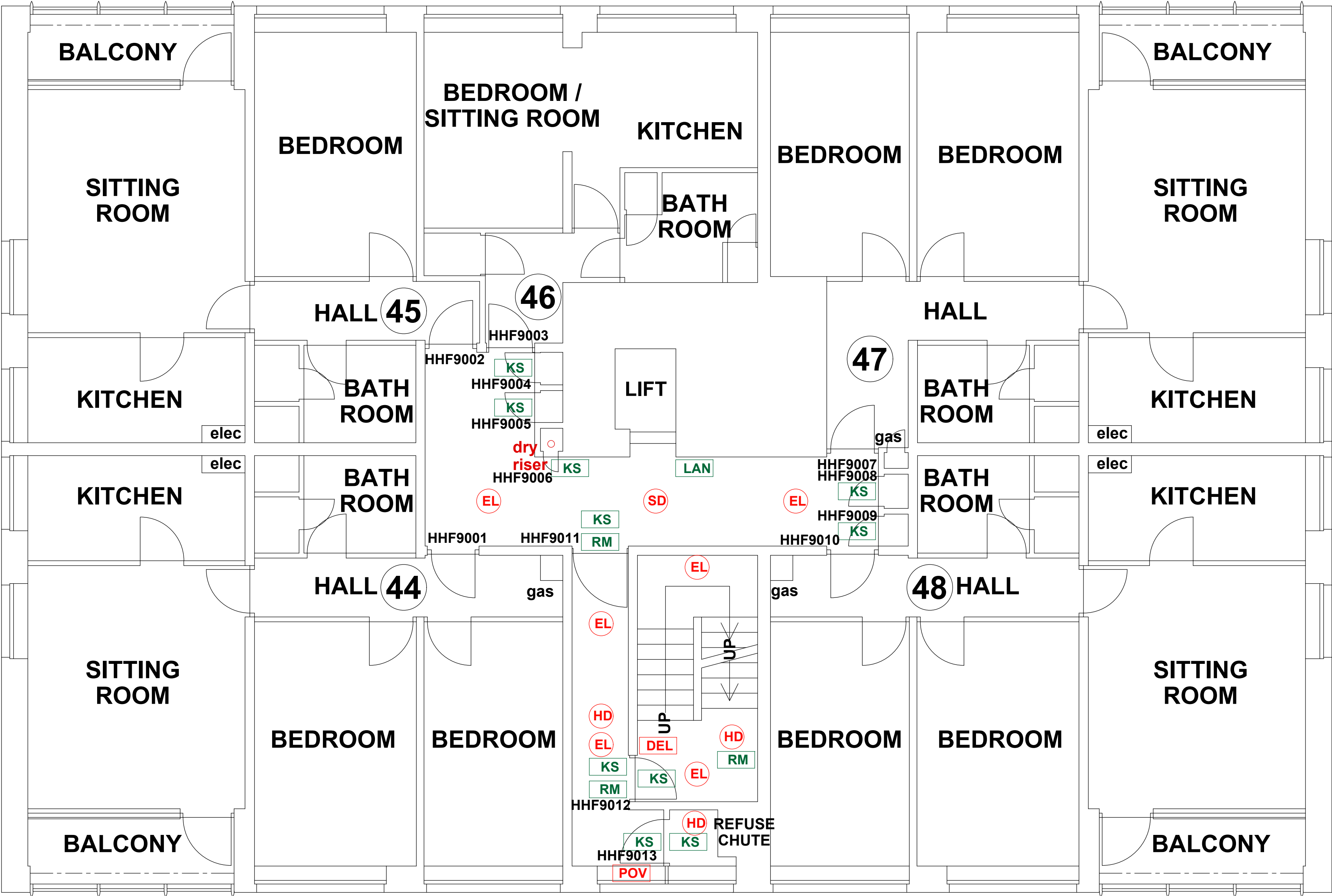
HOLLYHEDGE COURT EIGHTH FLOOR

REV | DATE | AMENDMENTS

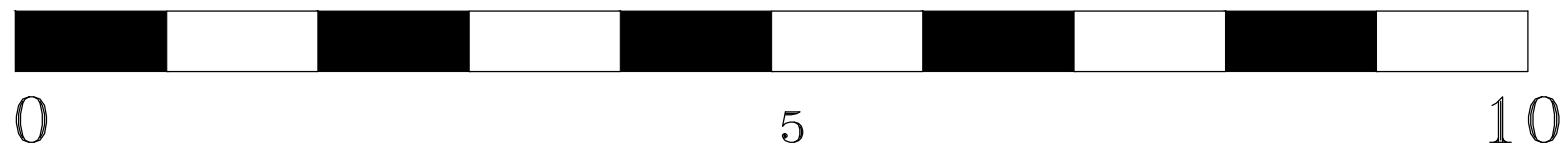


WEB: WWW.FIRNTEC.COM
EMAIL: CONTACTUS@FIRNTEC.COM
ADDRESS: 1ST FLOOR, ENDEAVOUR HOUSE,
PARKWAY CT, PLYMOUTH PL6 8LR
TEL: 01752 877 147

PROJECT: **HOLLYHEDGE COURT**
ADDRESS: HOLLYHEDGE COURT
WYTHENSHAW
MANCHESTER
M22 4QP
DWG NO.: HH-C_220020L_09
DWG TITLE:ROOF
DWG DATE: NOVEMBER 2022
DWG SIZE: SCALE 1:50 @ A1
DRAWN: NR | CHECKED: BR | ISSUED



- FIRE PRECAUTIONS LEGEND**
- CB Break glass type fire alarm call point
 - HD Heat sensitive detectors
 - SD Smoke sensitive detectors
 - EL Emergency light point.
 - FS Firemans Switch
 - DKA Emergency Drop Key Access
 - FAP Fire alarm indicator / repeat panel
 - GD1 Door/Access fitted with Gerda D1 Key lock
 - FB1 Door/Access fitted with FB1 Key lock
 - FB2 Door/Access fitted with FB2 Key lock
 - FB4 Door/Access fitted with FB4 Key lock
 - FB11P Door/Access fitted with FB11 Padlock
 - FB14P Door/Access fitted with FB14 Padlock
 - DRO Dry Riser Outlet
 - DEL Digital electronic lock door entry/exit system
 - PIB Premises Information Box
 - POV Permanently Open Vent
 - AOV Automatic Opening Vent
 - OV Openable Vent
 - Fire alarm sounder ('X' indicates integral flashing - Xenon light)
 - CCTV CCTV Security Camera
 - FB Fire Brigade Key Access
 - EXTINGUISH**
 - BLNRT 1.1m x 1.1m fire blanket - base of container to be 1500mm above floor level
 - A 6 litres AFFF aqueous foam extinguisher to BS:6575
 - C 9 litre wet chemical type extinguisher
 - D 4.5 litre dry powder type extinguisher
 - CD 2 kg carbon dioxide type extinguisher
 - CD 4.5 kg carbon dioxide type extinguisher
 - W 9 kg water type extinguisher
 - W 6 litre water type extinguisher
 - FIRE EXIT SIGNAGE**
 - E 'E' Signs to be externally illuminated by adjacent emergency light point
 - FE 'FE' denotes as previous but illuminated as part of sign
 - RM 'RM' denotes non illuminated sign
 - FIRE DOOR SIGNS AND FIRE ACTION NOTICES**
 - FAN Fire Action Notice
 - EFP Emergency Floor Plan
 - KS "FIRE DOOR KEEP SHUT" sign
 - KL "FIRE DOOR KEEP LOCKED" sign
 - KC "AUTOMATIC FIRE DOOR KEEP CLEAR" or "FIRE EXIT KEEP CLEAR" sign
 - LAN "CAUTION, IN THE EVENT OF FIRE DO NOT USE THIS LIFT"
 - DB DISTRIBUTION BOARD



SCALE (METRES)

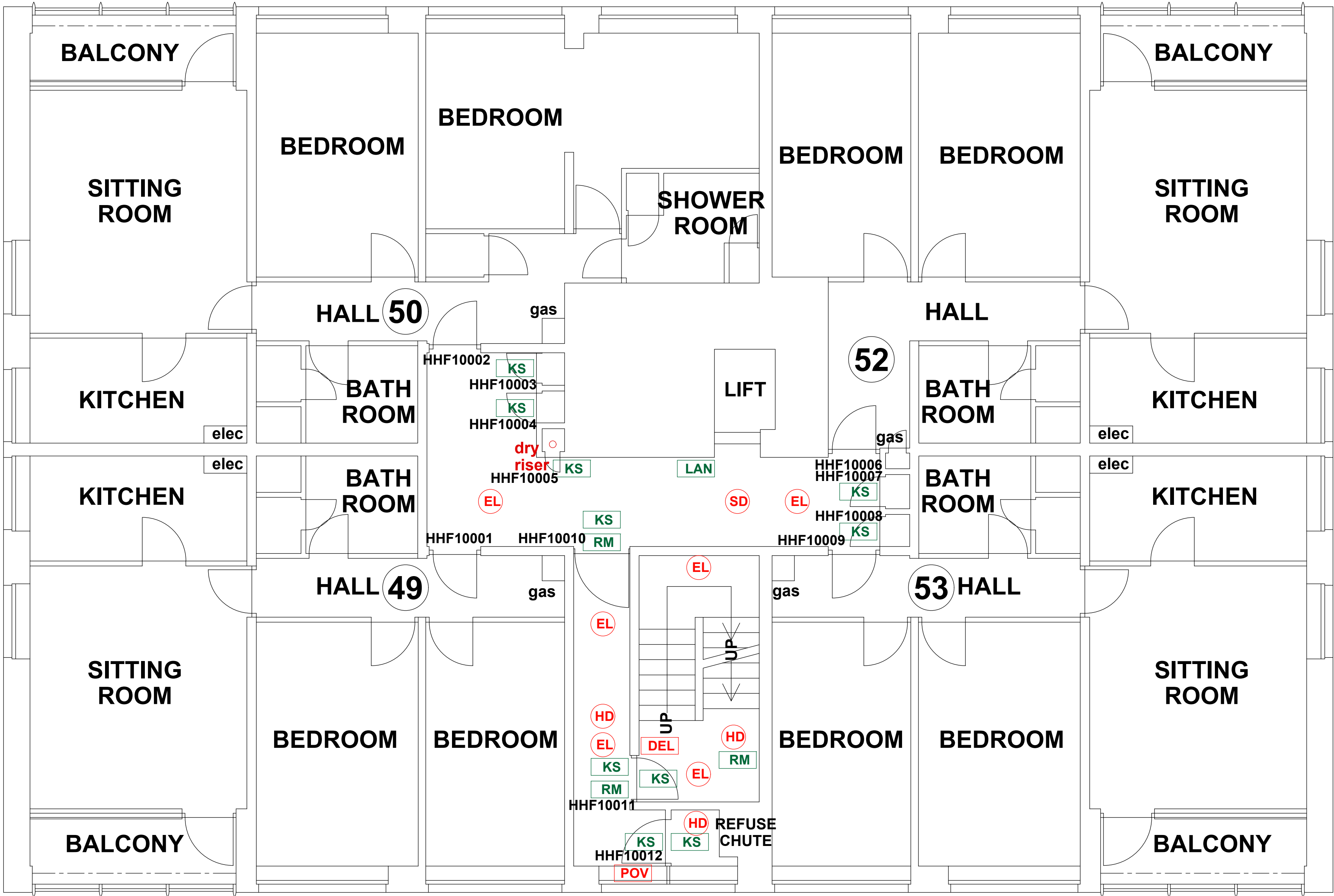
HOLLYHEDGE COURT NINTH FLOOR

REV DATE AMENDMENTS

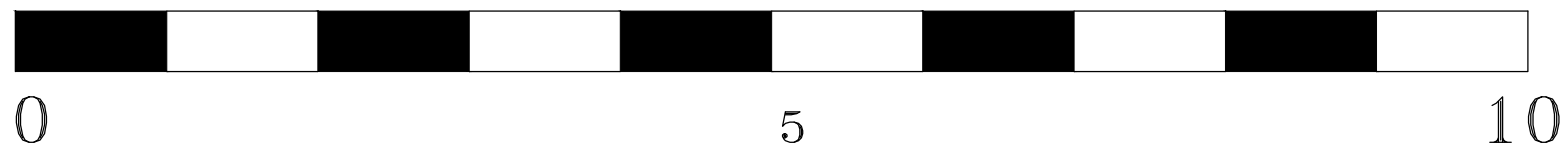


WEB: WWW.FIRNTEC.COM
EMAIL: CONTACTUS@FIRNTEC.COM
ADDRESS: 1ST FLOOR, ENDEAVOUR HOUSE,
PARKWAY CT, PLYMOUTH PL6 8LR
TEL: 01752 877 147

PROJECT: HOLLYHEDGE COURT
ADDRESS: HOLLYHEDGE COURT
WYTHENSHAW
MANCHESTER
M22 4QP
DWG NO.: HH-C-220020LJ0
DWG TITLE: LEVEL 9
DWG DATE: NOVEMBER 2022
DWG SIZE: SCALE 1:50 @ A1
DRAWN: NR CHECKED: BR



- FIRE PRECAUTIONS LEGEND**
- HB Break glass type fire alarm call point
 - SD Heat sensitive detectors
 - EL Smoke sensitive detectors
 - EL Emergency light point.
 - FS Firemans Switch
 - DKA Emergency Drop Key Access
 - FAP Fire alarm indicator / repeat panel
 - GD1 Door/Access fitted with Gerda D1 Key lock
 - FB1 Door/Access fitted with FB1 Key lock
 - FB2 Door/Access fitted with FB2 Key lock
 - FB4 Door/Access fitted with FB4 Key lock
 - FB11P Door/Access fitted with FB11 Padlock
 - FB14P Door/Access fitted with FB14 Padlock
 - DRO Dry Riser Outlet
 - DEL Digital electronic lock door entry/exit system
 - PIB Premises Information Box
 - POV Permanently Open Vent
 - AOV Automatic Opening Vent
 - OV Openable Vent
 - Fire alarm sounder ('X' indicates integral flashing - Xenon light)
 - CCTV CCTV Security Camera
 - FB Fire Brigade Key Access
 - EXTINGUISH**
 - BLNRT 1.1m x 1.1m fire blanket - base of container to be 1500mm above floor level
 - A 6 litres AFFF aqueous foam extinguisher to BS:6575
 - C 9 litre wet chemical type extinguisher
 - D 4.5 litre dry powder type extinguisher
 - C 2 kg carbon dioxide type extinguisher
 - C 4.5 kg carbon dioxide type extinguisher
 - W 9 kg water type extinguisher
 - W 6 litre water type extinguisher
 - FIRE EXIT SIGNAGE**
 - E 'E' Signs to be externally illuminated by adjacent emergency light point
 - FE 'FE' denotes as previous but illuminated as part of sign
 - RM 'RM' denotes non illuminated sign
 - FIRE DOOR SIGNS AND FIRE ACTION NOTICES**
 - FAN Fire Action Notice
 - EFPP Emergency Floor Plan
 - KS "FIRE DOOR KEEP SHUT" sign
 - KL "FIRE DOOR KEEP LOCKED" sign
 - KC "AUTOMATIC FIRE DOOR KEEP CLEAR" or "FIRE EXIT KEEP CLEAR" sign
 - LAN "CAUTION, IN THE EVENT OF FIRE DO NOT USE THIS LIFT"
 - DB DISTRIBUTION BOARD



SCALE (METRES)

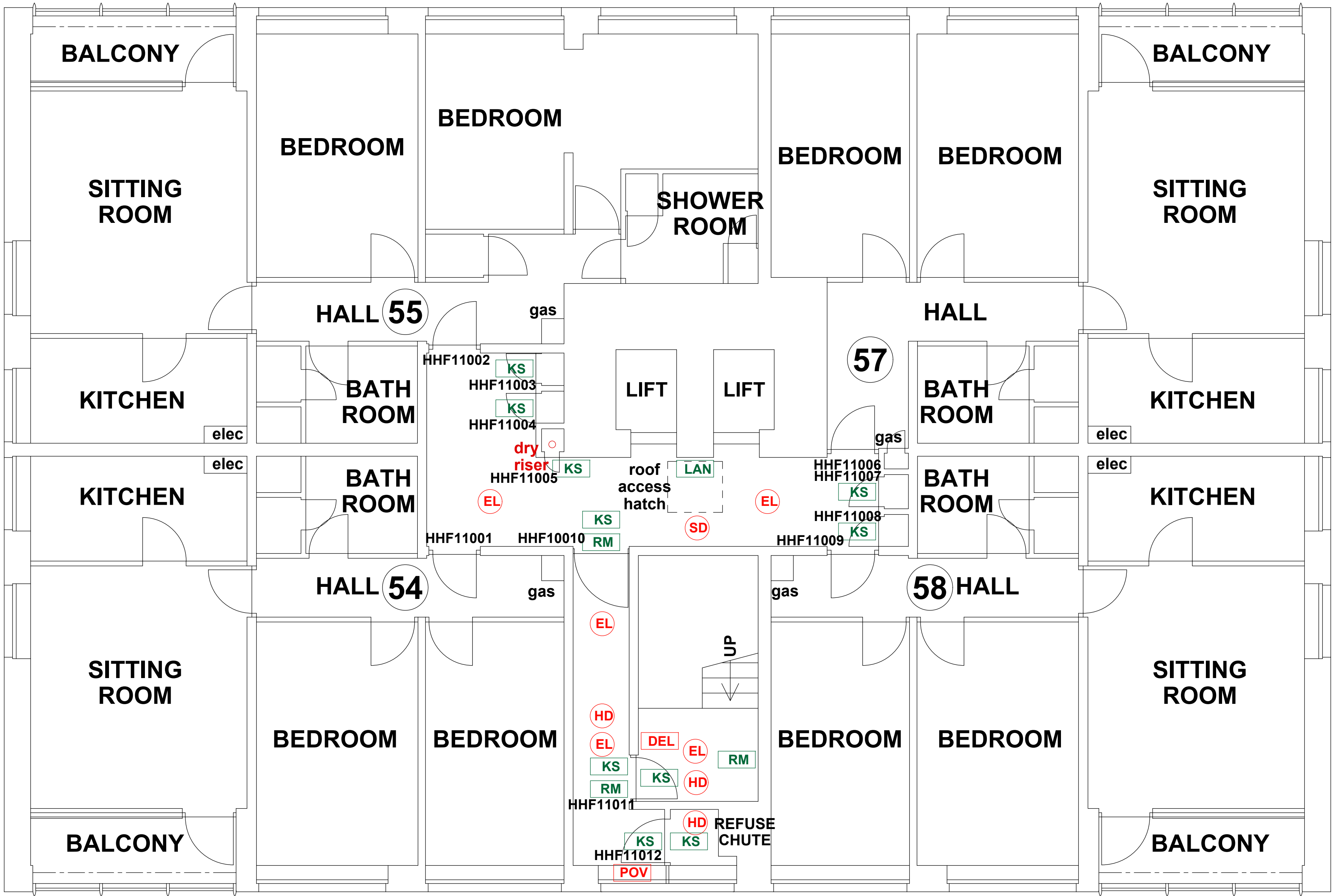
HOLLYHEDGE COURT TENTH FLOOR

REV DATE AMENDMENTS



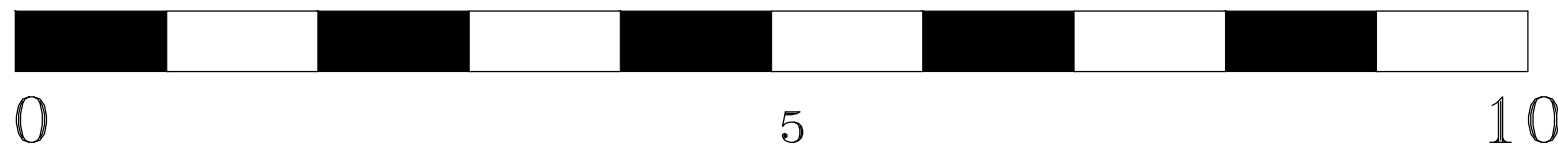
WEB: WWW.FIRNTEC.COM
EMAIL: CONTACTUS@FIRNTEC.COM
ADDRESS: 1ST FLOOR, ENDEAVOUR HOUSE,
PARKWAY CT, PLYMOUTH PL6 8LR
TEL: 01752 877 147

PROJECT: **HOLLYHEDGE COURT**
ADDRESS: HOLLYHEDGE COURT
WYTHENSHAW
MANCHESTER
M22 4QP
DWG NO.: HH-C-220020L11
DWG TITLE: LEVEL 10
DWG DATE: NOVEMBER 2022
DWG SIZE: SCALE 1:50 @ A1
DRAWN: NR | CHECKED: BR | ISSUED



FIRE PRECAUTIONS LEGEND

- CB Break glass type fire alarm call point
- HD Heat sensitive detectors
- SD Smoke sensitive detectors
- EL Emergency light point.
- FS Firemans Switch
- DKA Emergency Drop Key Access
- FAP Fire alarm indicator / repeat panel
- GD1 Door/Access fitted with Gerda D1 Key lock
- FB1 Door/Access fitted with FB1 Key lock
- FB2 Door/Access fitted with FB2 Key lock
- FB4 Door/Access fitted with FB4 Key lock
- FB11P Door/Access fitted with FB11 Padlock
- FB14P Door/Access fitted with FB14 Padlock
- DRO Dry Riser Outlet
- DEL Digital electronic lock door entry/exit system
- PIB Premises Information Box
- POV Permanently Open Vent
- AOV Automatic Opening Vent
- OV Openable Vent
- Fire alarm sounder ('X' indicates integral flashing - Xenon light)
- CCTV CCTV Security Camera
- FB Fire Brigade Key Access
- EXTINGUISH
 - BLNRT 1.1m x 1.1m fire blanket - base of container to be 1500mm above floor level
 - AF 6 litres AFFF aqueous foam extinguisher to BS:6575
 - W 9 litre wet chemical type extinguisher
 - DP 4.5 4.5 litre dry powder type extinguisher
 - CO 2 2 kg carbon dioxide type extinguisher
 - CO 4.5 4.5 kg carbon dioxide type extinguisher
 - W 9 9 kg water type extinguisher
 - W 6 6 litre water type extinguisher
- FIRE EXIT SIGNAGE
 - E 'E' Signs to be externally illuminated by adjacent emergency light point
 - FE 'FE' denotes as previous but illuminated as part of sign
 - RM 'RM' denotes non illuminated sign
- FIRE DOOR SIGNS AND FIRE ACTION NOTICES
 - FAN Fire Action Notice
 - EFPP Emergency Floor Plan
 - KS "FIRE DOOR KEEP SHUT" sign
 - KL "FIRE DOOR KEEP LOCKED" sign
 - KC "AUTOMATIC FIRE DOOR KEEP CLEAR" or "FIRE EXIT KEEP CLEAR" sign
 - LAN "CAUTION, IN THE EVENT OF FIRE DO NOT USE THIS LIFT"
 - DB DISTRIBUTION BOARD



SCALE (METRES)

HOLLYHEDGE COURT ELEVENTH FLOOR

REV DATE AMENDMENTS

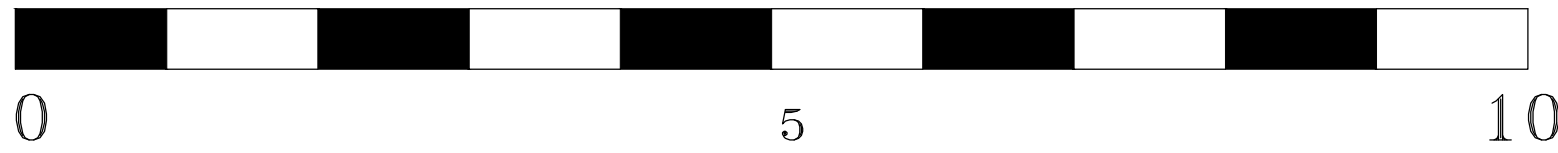
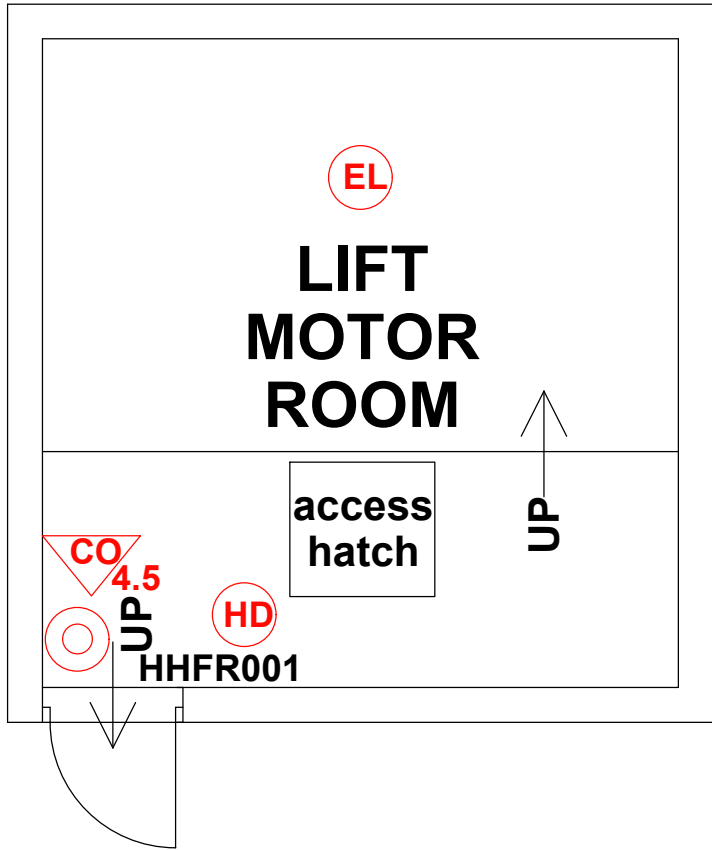


WEB: WWW.FIRNTEC.COM
EMAIL: CONTACTUS@FIRNTEC.COM
ADDRESS: 1ST FLOOR, ENDEAVOUR HOUSE,
PARKWAY CT, PLYMOUTH PL6 8LR
TEL: 01752 877 147

PROJECT: HOLLYHEDGE COURT
ADDRESS: WYTHENSHAW
MANCHESTER
M22 4QP
DWG NO.: HH-C-220020L12
DWG TITLE: LEVEL 11
DWG DATE: NOVEMBER 2022
DWG SIZE: SCALE 1:50 @ A1
DRAWN: NR CHECKED: BR

THIS DRAWING IS TO BE READ IN CONJUNCTION WITH ALL RELEVANT SPECIFICATIONS AND DRAWINGS ISSUED. THIS DRAWING IS CORRECT AT TIME OF SURVEY

© COPYRIGHT FIRNTEC LTD 2022



SCALE (METRES)

HOLLYHEDGE COURT ROOF SPACE

FIRE PRECAUTIONS LEGEND

- ⊙** Break glass type fire alarm call point
- HD** Heat sensitive detectors
- SD** Smoke sensitive detectors
- EL** Emergency light point.
- FS** Firemans Switch
- DKA** Emergency Drop Key Access
- FAP** Fire alarm indicator / repeat panel
- GD1** Door/Access fitted with Gerda D1 Key lock
- FB1** Door/Access fitted with FB1 Key lock
- FB2** Door/Access fitted with FB2 Key lock
- FB4** Door/Access fitted with FB4 Key lock
- FB11P** Door/Access fitted with FB11 Padlock
- FB14P** Door/Access fitted with FB14 Padlock
- DRO** Dry Riser Outlet
- DEL** Digital electronic lock door entry/exit system
- PIB** Premises Information Box
- POV** Permanently Open Vent
- AOV** Automatic Opening Vent
- OV** Openable Vent
- ~X~** Fire alarm sounder ('X' indicates integral flashing - Xenon light)
- CCTV** CCTV Security Camera
- FB** Fire Brigade Key Access
- EXTINGUISH**
- BLNRT** 1.1m x 1.1m fire blanket - base of container to be 1500mm above floor level
- AFF4** 6 litres AFFF aqueous foam extinguisher to BS:6575
- C4** 9 litre wet chemical type extinguisher
- DP4.5** 4.5 litre dry powder type extinguisher
- CO2** 2 kg carbon dioxide type extinguisher
- CO4.5** 4.5 kg carbon dioxide type extinguisher
- W9** 9 kg water type extinguisher
- W6** 6 litre water type extinguisher
- FIRE EXIT SIGNAGE**
- E** 'E' Signs to be externally illuminated by adjacent emergency light point
- FE** 'FE' denotes as previous but illuminated as part of sign
- RM** 'RM' denotes non illuminated sign
- FIRE DOOR SIGNS AND FIRE ACTION NOTICES**
- FAN** Fire Action Notice
- EFP** Emergency Floor Plan
- KS** "FIRE DOOR KEEP SHUT" sign
- KL** "FIRE DOOR KEEP LOCKED" sign
- KC** "AUTOMATIC FIRE DOOR KEEP CLEAR" or "FIRE EXIT KEEP CLEAR" sign
- LAN** "CAUTION, IN THE EVENT OF FIRE DO NOT USE THIS LIFT"
- DB** DISTRIBUTION BOARD

REV | DATE | AMENDMENTS



WEB: WWW.FIRNTEC.COM
EMAIL: CONTACTUS@FIRNTEC.COM
ADDRESS: 1ST FLOOR, ENDEAVOUR HOUSE,
PARKWAY CT, PLYMOUTH PL6 8LR
TEL: 01752 877 147

PROJECT: **HOLLYHEDGE COURT**
ADDRESS: HOLLYHEDGE COURT
WYTHENSHAW
MANCHESTER
M22 4QP
DWG NO.: HH-C_220020LJ3
DWG TITLE:ROOF
DWG DATE: NOVEMBER 2022
DWG SIZE: SCALE 1:50 @ A1
DRAWN: NR | CHECKED: BR | ISSUED