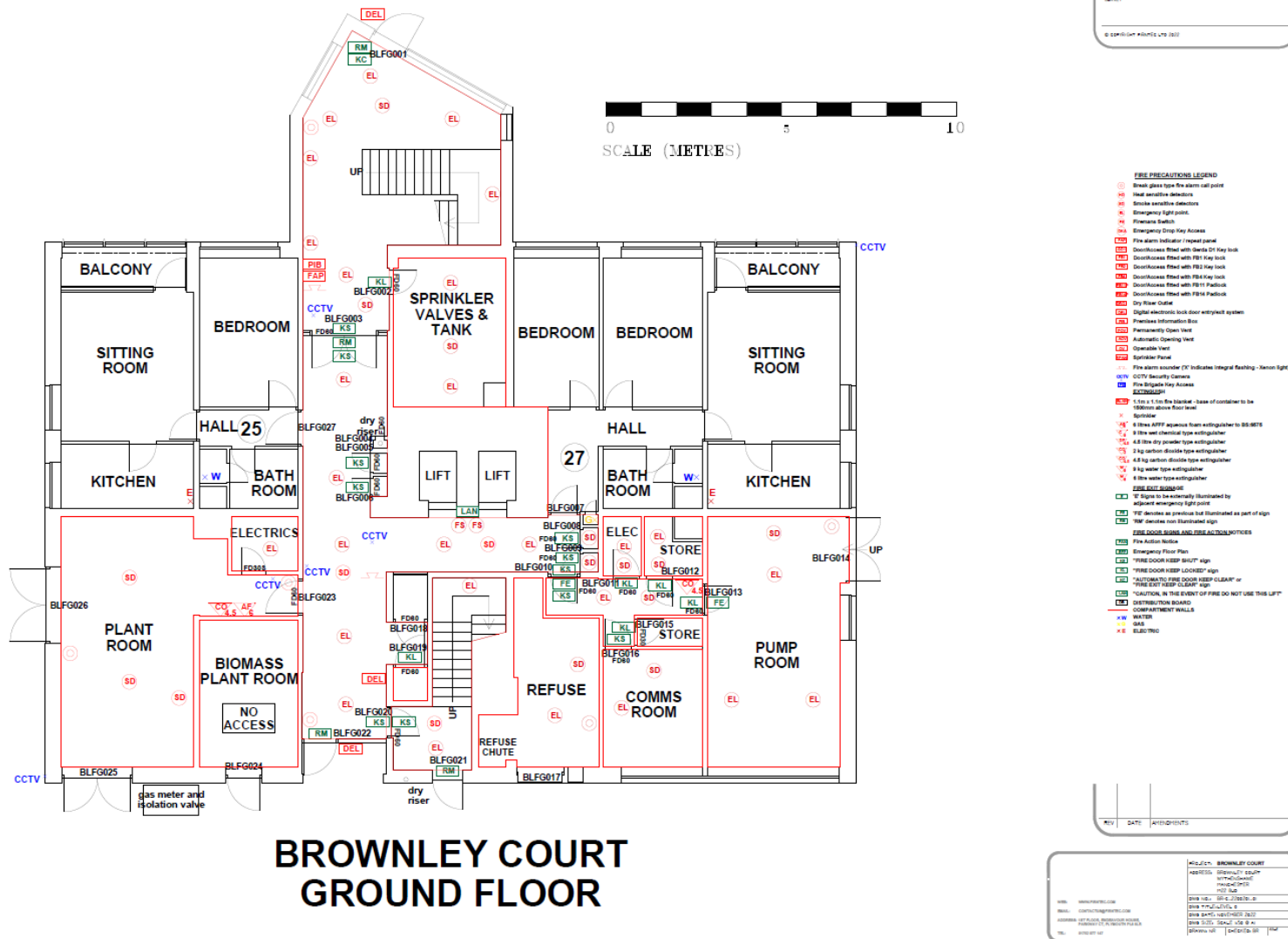


14. Appendix A –Floor plans

Ground Floor layout/ fire strategy plan



THIS DRAWING IS TO BE KEPT IN CONNECTION WITH ALL relevant
INFORMATION AND DRAWINGS RELATIVE TO THIS DRAWING. IT IS CORRECT AT THE
DATE OF THE SURVEY.

© COPYRIGHT 1998 LWS LTD



REV	DATE	AMENDMENTS

1070: WWW.FORTKNOX.COM 1080: CONTACT@FORTKNOX.COM ADDRESS: 400 ALPINE, BROWNSVILLE, TEXAS 77801-0000 1090: 4090 001 507	1010: BROWNLEY COURT ADDRESS: 10100 N. 101ST AVE 1020: 10100 N 1030: 10100 N 1040: 10100 N 1050: 10100 N 1060: 10100 N 1070: 10100 N 1080: 10100 N 1090: 10100 N 1100: 10100 N 1110: 10100 N 1120: 10100 N 1130: 10100 N 1140: 10100 N 1150: 10100 N 1160: 10100 N 1170: 10100 N 1180: 10100 N 1190: 10100 N 1200: 10100 N 1210: 10100 N 1220: 10100 N 1230: 10100 N 1240: 10100 N 1250: 10100 N 1260: 10100 N 1270: 10100 N 1280: 10100 N 1290: 10100 N 1300: 10100 N 1310: 10100 N 1320: 10100 N 1330: 10100 N 1340: 10100 N 1350: 10100 N 1360: 10100 N 1370: 10100 N 1380: 10100 N 1390: 10100 N 1400: 10100 N 1410: 10100 N 1420: 10100 N 1430: 10100 N 1440: 10100 N 1450: 10100 N 1460: 10100 N 1470: 10100 N 1480: 10100 N 1490: 10100 N 1500: 10100 N 1510: 10100 N 1520: 10100 N 1530: 10100 N 1540: 10100 N 1550: 10100 N 1560: 10100 N 1570: 10100 N 1580: 10100 N 1590: 10100 N 1600: 10100 N 1610: 10100 N 1620: 10100 N 1630: 10100 N 1640: 10100 N 1650: 10100 N 1660: 10100 N 1670: 10100 N 1680: 10100 N 1690: 10100 N 1700: 10100 N 1710: 10100 N 1720: 10100 N 1730: 10100 N 1740: 10100 N 1750: 10100 N 1760: 10100 N 1770: 10100 N 1780: 10100 N 1790: 10100 N 1800: 10100 N 1810: 10100 N 1820: 10100 N 1830: 10100 N 1840: 10100 N 1850: 10100 N 1860: 10100 N 1870: 10100 N 1880: 10100 N 1890: 10100 N 1900: 10100 N 1910: 10100 N 1920: 10100 N 1930: 10100 N 1940: 10100 N 1950: 10100 N 1960: 10100 N 1970: 10100 N 1980: 10100 N 1990: 10100 N 2000: 10100 N 2010: 10100 N 2020: 10100 N 2030: 10100 N 2040: 10100 N 2050: 10100 N 2060: 10100 N 2070: 10100 N 2080: 10100 N 2090: 10100 N 2100: 10100 N 2110: 10100 N 2120: 10100 N 2130: 10100 N 2140: 10100 N 2150: 10100 N 2160: 10100 N 2170: 10100 N 2180: 10100 N 2190: 10100 N 2200: 10100 N 2210: 10100 N 2220: 10100 N 2230: 10100 N 2240: 10100 N 2250: 10100 N 2260: 10100 N 2270: 10100 N 2280: 10100 N 2290: 10100 N 2300: 10100 N 2310: 10100 N 2320: 10100 N 2330: 10100 N 2340: 10100 N 2350: 10100 N 2360: 10100 N 2370: 10100 N 2380: 10100 N 2390: 10100 N 2400: 10100 N 2410: 10100 N 2420: 10100 N 2430: 10100 N 2440: 10100 N 2450: 10100 N 2460: 10100 N 2470: 10100 N 2480: 10100 N 2490: 10100 N 2500: 10100 N 2510: 10100 N 2520: 10100 N 2530: 10100 N 2540: 10100 N 2550: 10100 N 2560: 10100 N 2570: 10100 N 2580: 10100 N 2590: 10100 N 2600: 10100 N 2610: 10100 N 2620: 10100 N 2630: 10100 N 2640: 10100 N 2650: 10100 N 2660: 10100 N 2670: 10100 N 2680: 10100 N 2690: 10100 N 2700: 10100 N 2710: 10100 N 2720: 10100 N 2730: 10100 N 2740: 10100 N 2750: 10100 N 2760: 10100 N 2770: 10100 N 2780: 10100 N 2790: 10100 N 2800: 10100 N 2810: 10100 N 2820: 10100 N 2830: 10100 N 2840: 10100 N 2850: 10100 N 2860: 10100 N 2870: 10100 N 2880: 10100 N 2890: 10100 N 2900: 10100 N 2910: 10100 N 2920: 10100 N 2930: 10100 N 2940: 10100 N 2950: 10100 N 2960: 10100 N 2970: 10100 N 2980: 10100 N 2990: 10100 N 3000: 10100 N 3010: 10100 N 3020: 10100 N 3030: 10100 N 3040: 10100 N 3050: 10100 N 3060: 10100 N 3070: 10100 N 3080: 10100 N 3090: 10100 N 3100: 10100 N 3110: 10100 N 3120: 10100 N 3130: 10100 N 3140: 10100 N 3150: 10100 N 3160: 10100 N 3170: 10100 N 3180: 10100 N 3190: 10100 N 3200: 10100 N 3210: 10100 N 3220: 10100 N
---------------------------------------------------------------------------------------------------------------------------------------------------------------------------------------------------------------------	-----------------------------------------------------------------------------------------------------------------------------------------------------------------------------------------------------------------------------------------------------------------------------------------------------------------------------------------------------------------------------------------------------------------------------------------------------------------------------------------------------------------------------------------------------------------------------------------------------------------------------------------------------------------------------------------------------------------------------------------------------------------------------------------------------------------------------------------------------------------------------------------------------------------------------------------------------------------------------------------------------------------------------------------------------------------------------------------------------------------------------------------------------------------------------------------------------------------------------------------------------------------------------------------------------------------------------------------------------------------------------------------------------------------------------------------------------------------------------------------------------------------------------------------------------------------------------------------------------------------------------------------------------------------------------------------------------------------------------------------------------------------------------------------------------------------------------------------------------------------------------------------------------------------------------------------------------------------------------------------------------------------------------------------------------------------------------------------------------------------------------------------------------------------------------------------------------------------------------------------------------------------------------------------------------------------------------------------------------------------------------------------------------------------------------------------------------------------------------------------------------------------------------------------------------------------------------------------------------------------------------------------------------------------------------------------------------------------------------------------------------------------------------------------------------------------------------------------------------------------------------------------------------------------------------------------------------------------------------------------------------------------------------------------------------------------------------------------------------------------------------------------------------------------------------------------------------------------------------------------------------------------------------------------------------------------------------------------------------------------------------------------------------------------------------------------------------------------------------------------------------------------------------------------------------------------------------------------------------------------------------------------------------------------------------------------------------------------------------------------------------------------------------------------------------------------------------------------------------------------------------------------------------------------------------------------------------------------------------

BROWNLEY COURT ROOF SPACE



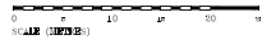
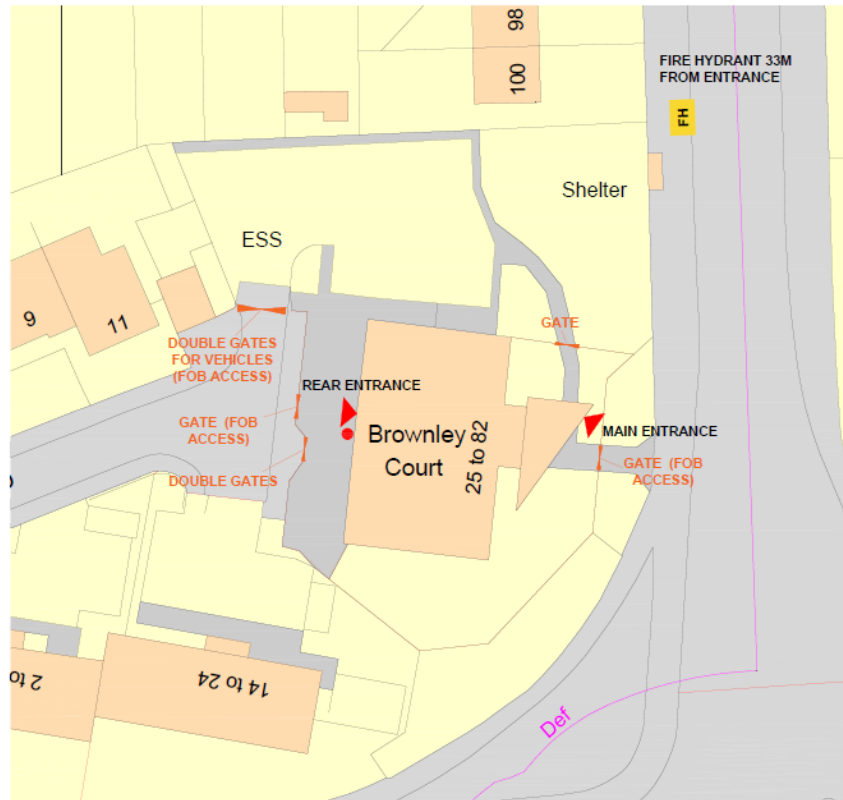
FIRE PRECAUTIONS LEGEND

- [illegible]

Any	DATE	Antibiotics
-----	------	-------------

[illegible]

Site Plan



THIS DRAWING IS TO BE READ IN CONNECTION WITH ALL RELEVANT SPECIFICATIONS AND DRAWINGS ISSUED. THIS DRAWING IS CORRECT AT TIME OF SURVEY.

© COPYRIGHT PHOTOC LTD 2003

KEY

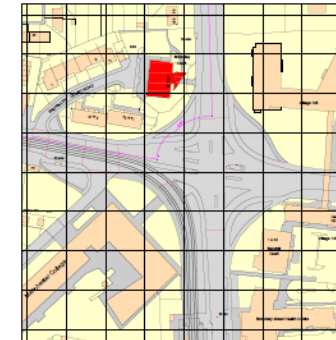
FH FIRE HYDRANT

 MAIN ACCESS POINTS INTO BUILDING

● DRY RISING MAIN
(INLET/OUTLET)

—— FENCE / RAIL

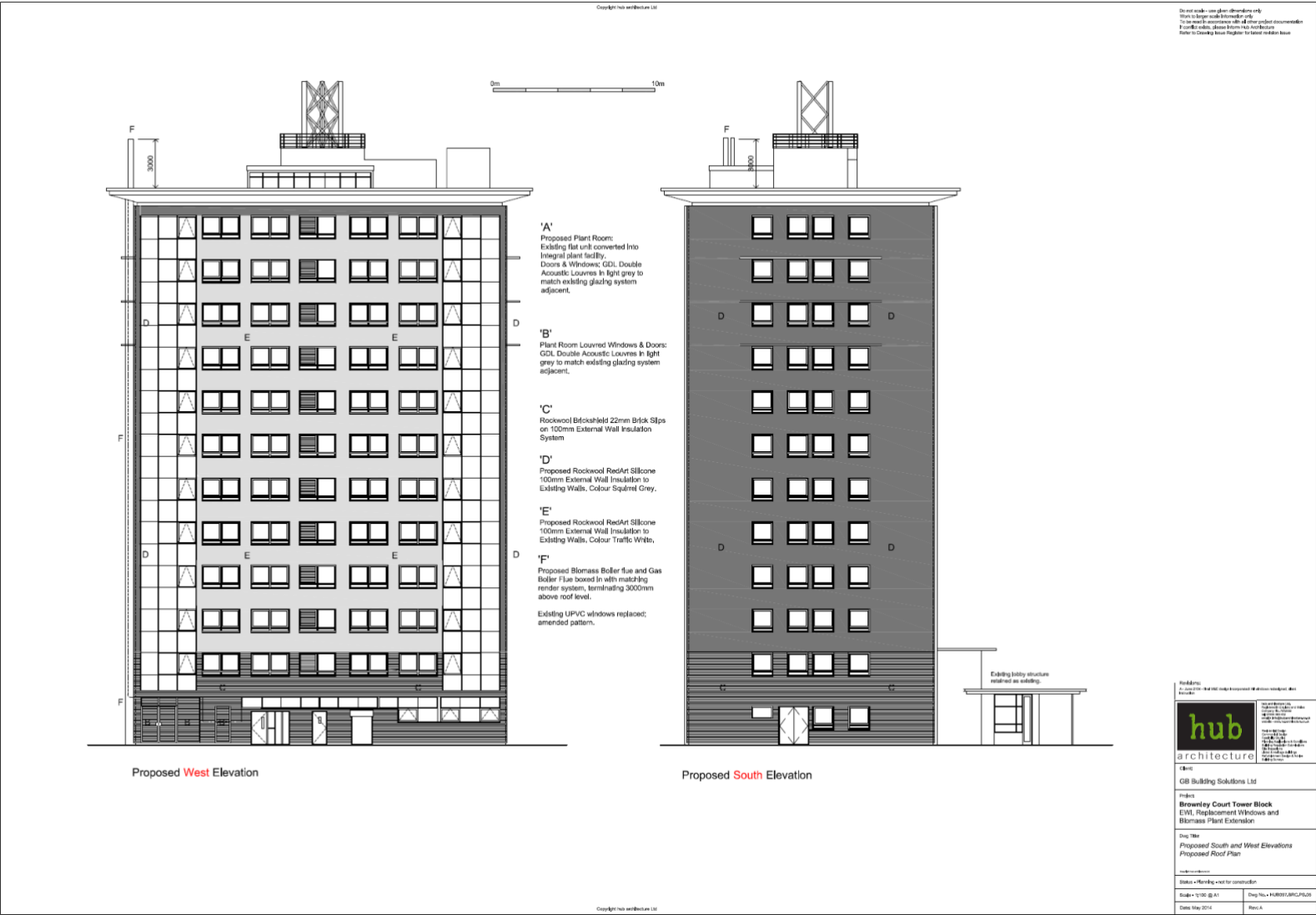
- **BOLLARDS**



REV	DATE	AMENDMENTS
-----	------	------------

[illegible]

Elevations drawings – As installed External Wall Insulation

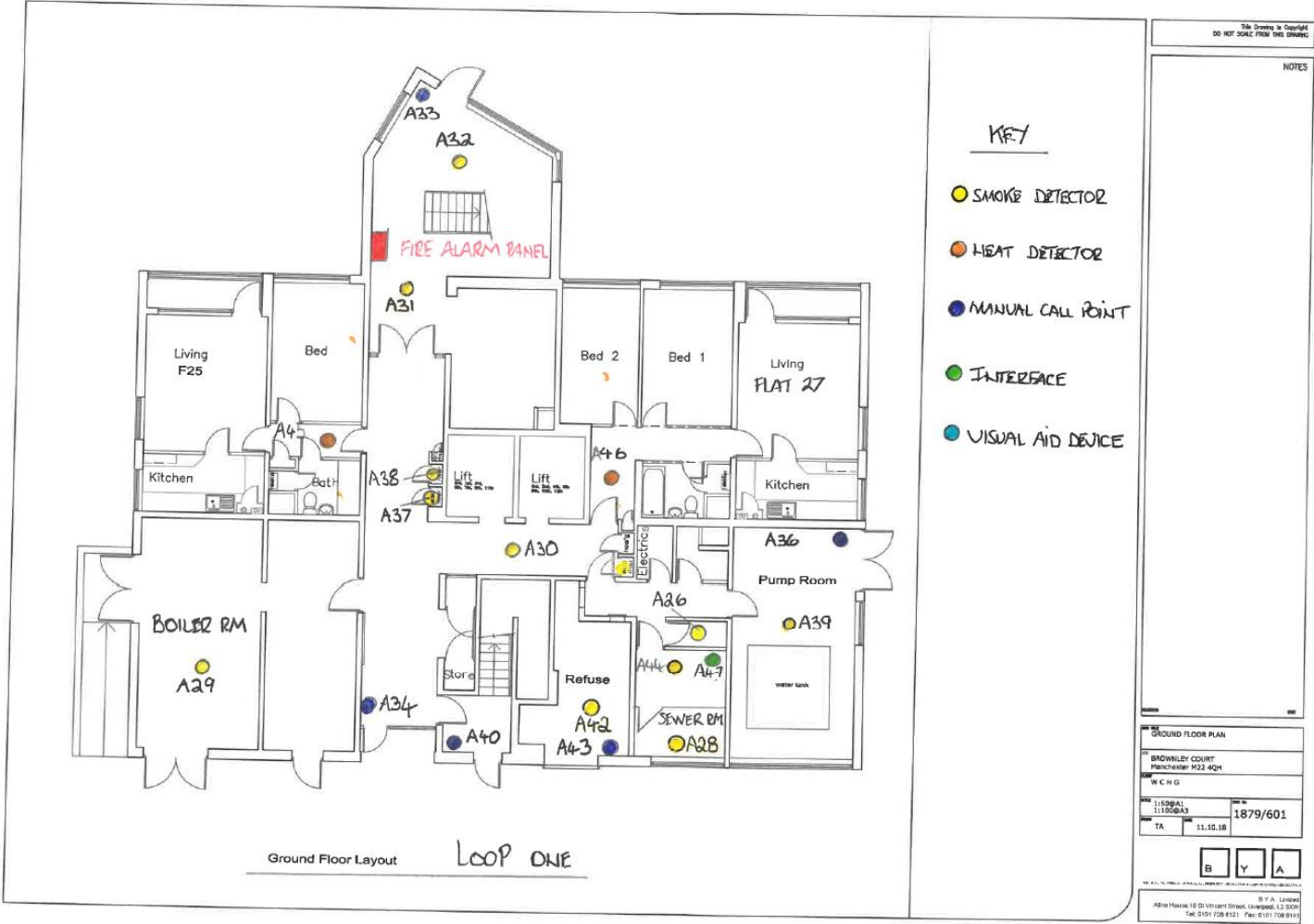


Incoming mains and Isolation points.



Fire Alarm Drawing Ground Floor

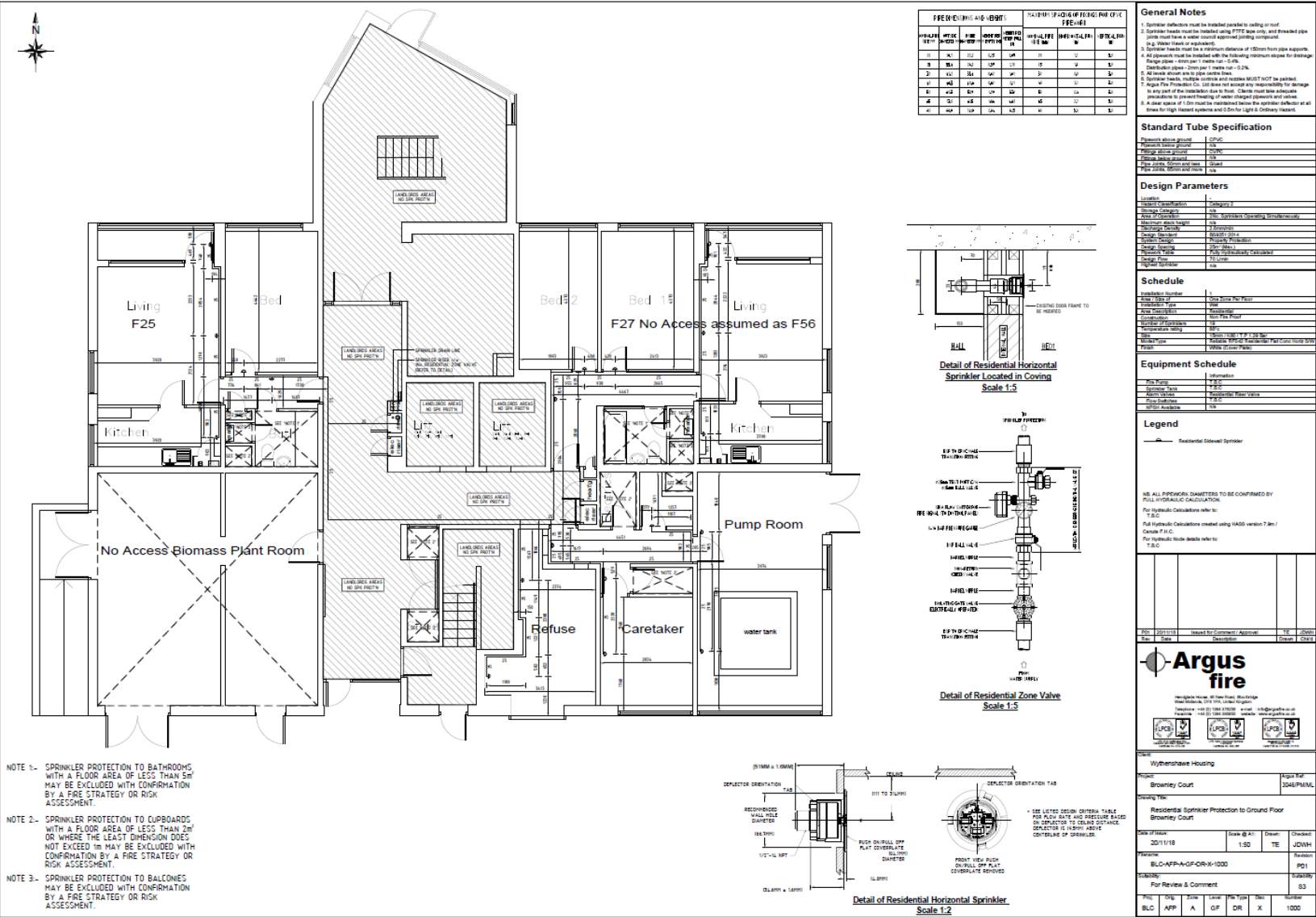
Brownley Court



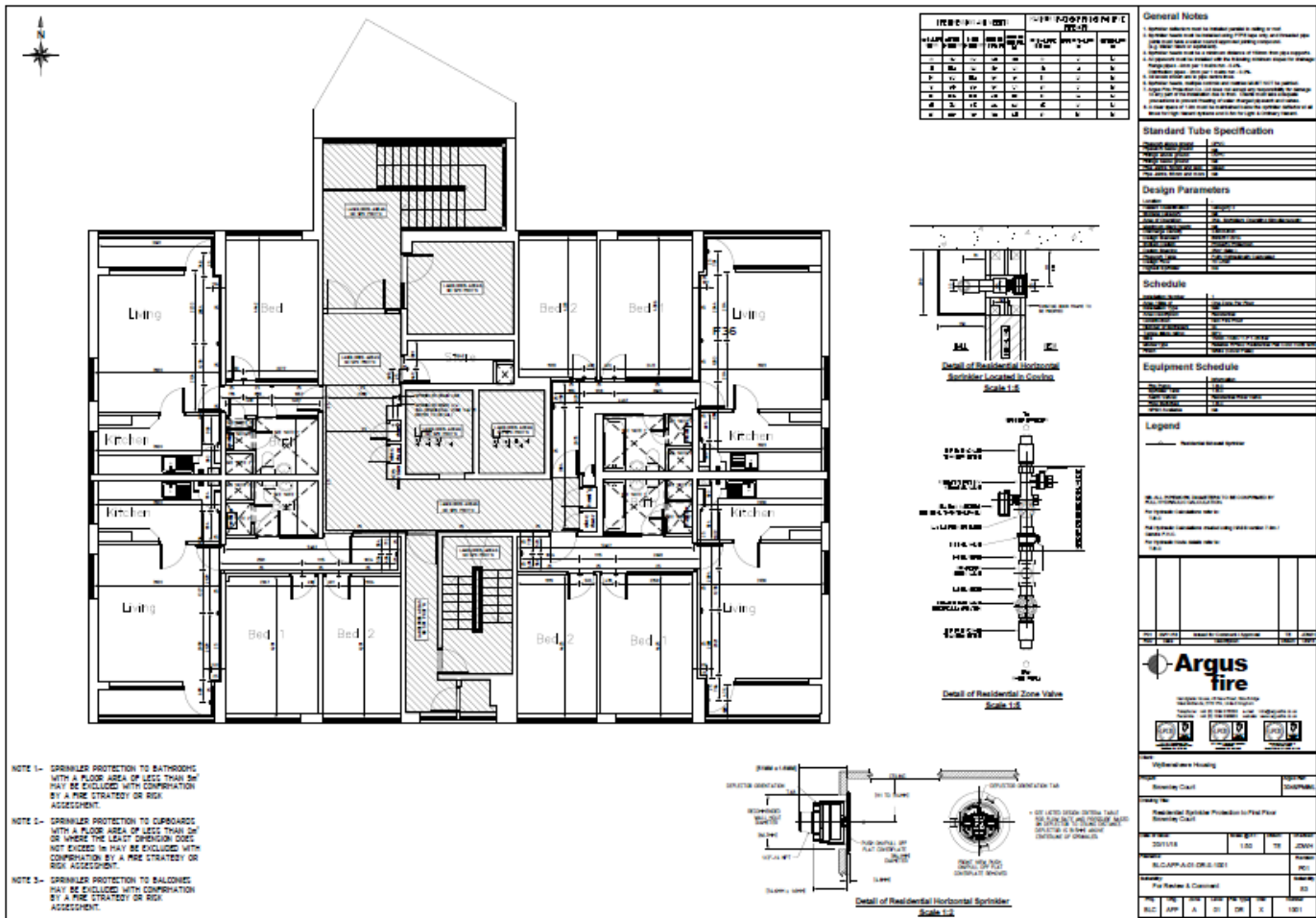
Fire Alarm Drawing- Intermediate Floor



Sprinkler plan – Ground Floor



Sprinklers- Intermediate floor



Appendix B – Surveys and Reports
compartmentation survey sample pages.

Date Submitted: 23/07/20 10:31 AM



Surveying form

Section 1



Client	Wythenshawe
Site address	26 Brownley Court, M22 4QH
Date/Time	23/07/20

FRA actions




Section 1

Action	Fire stopping and Penetrations to raisers and lobby flats
--------	-----------------------------------------------------------

Surveying form

	<p>Bin chute Boarding above door 0.5sqm</p> <p>Ground floor Gas Raiser by flat 25 2 x batt 2 x pipe collars (60mm)</p> <p>Storage cupboard by bin chute 2sqm boarding above door 7Lm seal mastic</p>
Multi Photo	
	

Surveying form



BF 1001233

CERTIFICATE OF COMPLIANCE IN RESPECT OF FIRE SYSTEMS MODULE(S)

The Certificate is issued by the firm named in Part One of the Schedule in respect of the Fire Protection System provided for the person(s) or organisation named in Part Two of the Schedule of the premises identified in Part Three of the Schedule, being a Fire Protection System of the Type described in Part Four of the Schedule. The Certificate of Compliance should be read in conjunction with the agreed list of Variations.

	SCHEDULE			
Part 1	Name of Issuing Firm: Fieldway Group			
Part 2	Name of Customer: WYTHENSHAW COMMUNITY HOUSING GROUP			
Part 3	Address of Protected Premises			
	Line 1	BROWNLEY COURT		
	Line 2	BROWNLEY ROAD		
	Town	WYTHENSHAW		
	County	Greater Manchester		
	Postcode	M12 4CH		
Part 4	4.1 Type of System & Standard / B Code of Practice Application		4.4 Existing System	He
	4.2 Type of Signalling	J	4.5 List Variations	N/A
	4.3 Type of Premises	E		
Part 5	BAFE Registration Details			
	5.1 Design Company	FIELDWAY SUPPLIES LTD	5.4 Hardware Company	FIELDWAY SUPPLIES LTD
	5.2 Installation Company	FIELDWAY SUPPLIES LTD	5.5 Verifying Company	FIELDWAY SUPPLIES LTD
	5.3 Commissioning Company FIELDWAY SUPPLIES LTD			
Part 6	Date of Installation	Jul 27, 2019	Brigade Authority Code	1803

We, being currently an SSAIB 'Approved Firm' in respect of Fire System Installations of the type(s) we have identified in Part Four of the above Schedule, Certify that the installation in the above Schedule complied with the Standard or Code of Practice identified in the above Schedule with all other requirements as currently laid down under the SSAIB Scheme in respect of each an Installation. Terms and conditions of issue are stated online: ssaib.org.

Date of issue:

Signed (for and on behalf of the issuing firm):

Job Title: SSS Manager

SSAIB, 7-11 Earsdon Road, West Monkseaton, Whitley Bay, NE26 9SX
BAFE, Bridge 2, The Fire Service College, Linton Road, Moulton+Marsh, Gloucestershire, GL50 0RU


Certificate of Fire Protection Works



No. 822.2020

Argus Fire Protection Company Ltd
Hendglade House
46 New Bridge Road
Stourbridge
DY8 1PA

**Priory Fields,
Kettleby, Brigg
Lincolnshire
Tel: 01652 413110**

Properties: Westview Court Greenway Wythenshawe Manchester M22 4LT		Tel: 07785426299
		Email: k.winstanley@argusfire.co.uk
Areas of application:	Sprinkler system pipes.	
Products applied:	Firepro acoustic intumescent sealant.	
Specifics:	Fire stopping products have been applied to orange pipe breaches in boxing in on all floors.	
Installers Details		
Name: Steve Asquith	Address: Priory Fields Kettleby Brigg Lincolnshire DN20 9HN	Tel: 01652 413110
		Email: phil@flamehold.co.uk
Company Name: Flame Hold Ltd		Qualification: GFireE , FPA Fire Risk Assessor & FIRAS Accreditation – Certificate No. FD5102; FIRAS ID – S69545
I/We hereby certify that the Passive Fire Protection products/systems, supplied for the above project have been supplied & fitted by Flame Hold Ltd. To the best of my knowledge and belief – based on the information supplied – to be the appropriate products/systems for the project to provide Passive Fire Protection to achieve 30 minute fire ratings.		
Signature of Installer: 		Date: 07.12.2020

All Fire Prevention Measures should be checked annually and preventative maintenance carried out. Failure to do so may impair the performance.

Completion Certificate for 1993 – Brownley Court

We Argus Fire Protection Company Ltd hereby certify that we have completed on 26th February 2020

An Automatic fire Sprinkler system which has been installed, tested and commissioned inline with the British standard 9251: 2014 – Fire Sprinkler systems for domestic & residential.

Number of Sprinklers	Type	Response	Temperature	K-factor
340	Extended Coverage Sidewall	SR	74 Degree C	80

other relevant information

The system has been designed and installed to the general requirements of BS9251; 2014

The system consists of 1 No. Main Pump wired directly from the primary single phase 415v incoming supply.

We have provided 12 No. Flow switches to each of the floors.

Where the sprinkler system has been refused, we have capped off the sprinkler feed mains outside of the flats ready for future connections.

This has also been configured so that on operation of a flow switch notification will be sent to the alarm panel on the ground floor detailing the level of the operating flow switch. There is also a flashing beacon / sounder on top of the ground floor panel which will give both a visual and audible alarm.

Date Sprinkler System Commissioned / Left Operational – 26th February 2020

Client's Acceptance:



.....
Signature / Name

Date 26/02/202

.....
Position

Argus Fire Protection Co Ltd:

Kenny Winstanley

Kenny Winstanley – Senior Project Manager
Signature / Name